

# SAFE BANK BOOK ADDENDUM

---

UPDATED 3/31/2022

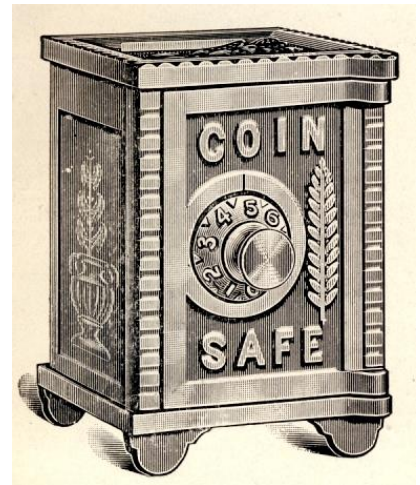
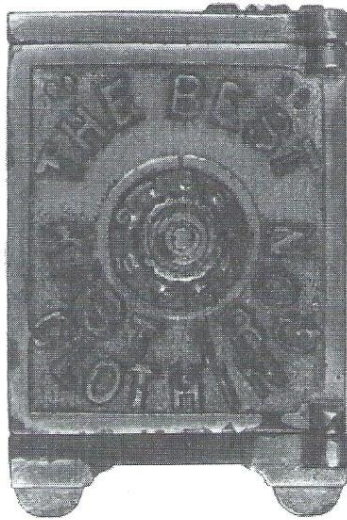
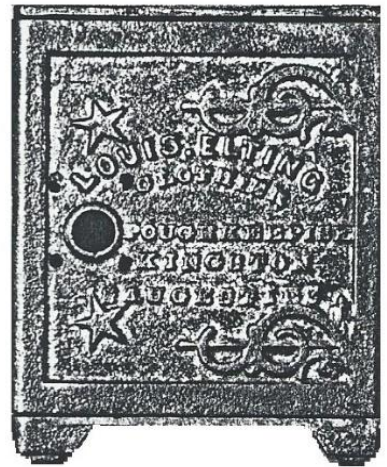
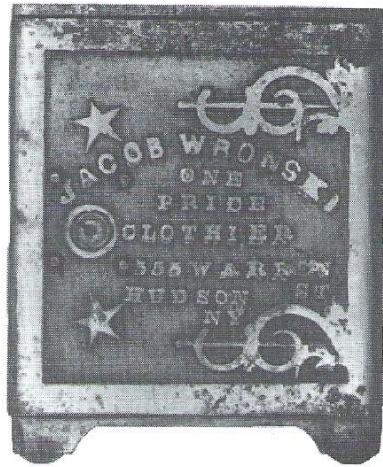
**PREPARED BY:  
MICHAEL B. HOLZ**



The banks identified in this ADDENDUM consist of the 9 examples found in Bob & Shirley Peirce's book from 1991 titled *Iron Safe Banks* where an example was not located in time to be photographed for the SBB publication, three examples identified in original company catalogs or other references where examples could not be located, and new additions not previously identified. Also included is a list of other known examples where a photo is not available. This document will be revised periodically as examples are located to be photographed.

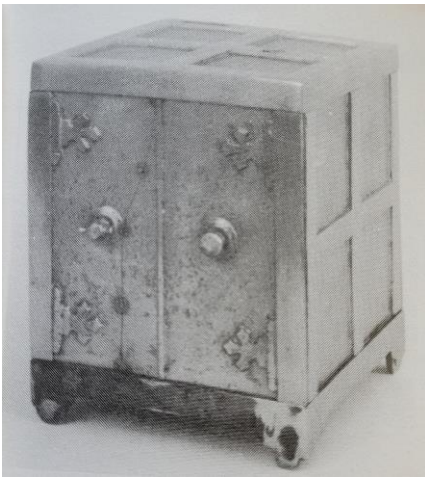
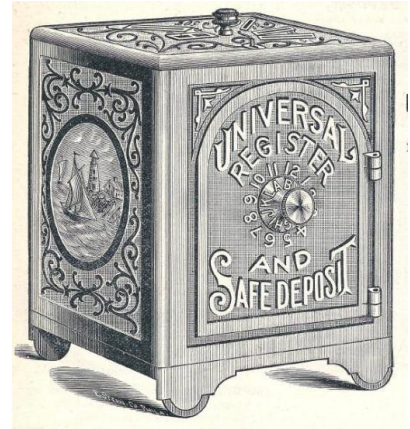
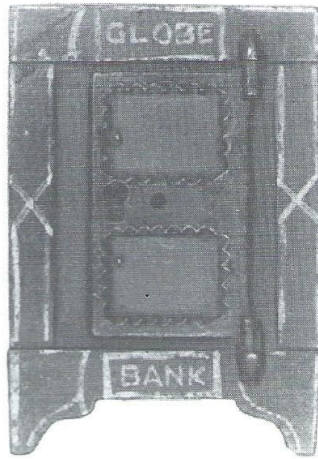
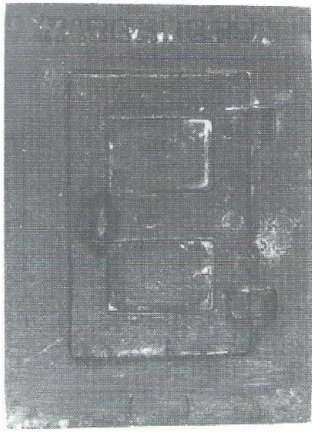
**For additions to this document contact the author at:**  
[MBHolzFamily@gmail.com](mailto:MBHolzFamily@gmail.com) or (717) 891-2591

<b>387. BANK COLUMBUS</b>  <b>RARITY: F HEIGHT: 5-3/8"</b>  <b>REF: ISB UPDATE 2-6</b>  <b>FINISH: NICKEL</b>  <b>MFG: COMSTOCK &amp; WING</b>  <b>MFG DATE: CIRA 1892</b>	<b>388. JACOB WRONSKI</b>  <b>ONE PRICE CLOTHIER</b>  <b>RARITY: E HEIGHT: 6-3/8"</b>  <b>REF: ISB-181</b>  <b>FINISH: NICKEL</b>  <b>MFG: W. ROUSE &amp; COMPANY</b>  <b>MFG DATE: CIRA 1895</b>	<b>389. LOUIS ELTING CLOTHIER</b>  <b>RARITY: F HEIGHT: 6-3/8"</b>  <b>REF: N/L</b>  <b>FINISH: NICKEL</b>  <b>MFG: W. ROUSE &amp; COMPANY</b>  <b>MFG DATE: CIRA 1895</b>
<b>390. GOLDEN EAGLE CLOTHIERS</b>  <b>RARITY: F HEIGHT: 4"</b>  <b>REF: ISB-063</b>  <b>FINISH: NICKEL</b>  <b>MFG: REGENT</b>  <b>MFG DATE: CIRA 1895</b>	<b>391. "THE BEST" KAST IRON</b>  <b>CLOTHING – C. PETERSON</b>  <b>RARITY: F HEIGHT: 4"</b>  <b>REF: ISB-067</b>  <b>FINISH: NICKEL</b>  <b>MFG: REGENT</b>  <b>MFG DATE: CIRA 1895</b>	<b>392. COIN SAFE</b>  <b>RARITY: F HEIGHT: 4"</b>  <b>REF: N/L</b>  <b>FINISH: NICKEL</b>  <b>MFG: GREY IRON</b>  <b>MFG DATE: CIRA 1925</b>
<b>393. NAVY SAFE</b>  <b>RARITY: E HEIGHT: 3-1/2"</b>  <b>REF: N/L</b>  <b>FINISH: NICKEL</b>  <b>MFG: WING</b>  <b>MFG DATE: CIRA 1899</b>	<b>394. MOON AND STAR SAFE</b>  <b>SM-SQ CORNERS &amp; SM DIAL</b>  <b>RARITY: C HEIGHT: 4"</b>  <b>REF: ISB-157</b>  <b>FINISH: NICKEL</b>  <b>MFG: UNKNOWN</b>  <b>MFG DATE: CIRA 1895</b>	<b>395. RECESSED DOOR FILIGREE</b>  <b>SM COMBO</b>  <b>RARITY: E HEIGHT: 5-5/8"</b>  <b>REF: ISB UPDATE 2-7</b>  <b>FINISH: NICKEL OR COPPER EP</b>  <b>MFG: WING &amp; PARSONS</b>  <b>MFG DATE: CIRA 1910</b>



<p><b>396. MARGARETTA</b></p> <p><b>RARITY: F HEIGHT: 4-1/4"</b></p> <p><b>REF: ISB-234</b></p> <p><b>FINISH: UNFINISHED</b></p> <p><b>MFG: UNKNOWN</b></p> <p><b>MFG DATE: CIRA 1880</b></p>	<p><b>397. GLOBE BANK</b></p> <p><b>(SBB #234 VARIATION 4)</b></p> <p><b>RARITY: E HEIGHT: 4-1/8"</b></p> <p><b>REF: ISB-258</b></p> <p><b>FINISH: BLACK W/ BL, GRN OR RD</b></p> <p><b>MFG: STEVENS</b></p> <p><b>MFG DATE: CIRA 1875</b></p>	<p><b>398. UNIVERSAL REGISTER AND</b></p> <p><b>SAFE DEPOSIT</b></p> <p><b>RARITY: F HEIGHT: 6-1/2"</b></p> <p><b>REF: ISB UPDATE 1-8</b></p> <p><b>FINISH: BLACK W/PAINTED DETAILS</b></p> <p><b>MFG: KYSER &amp; REX</b></p> <p><b>MFG DATE: CIRA 1893</b></p>
<p><b>399. HAMRICK'S TRIPLE COIN</b></p> <p><b>RARITY: E HEIGHT: 6-1/8"</b></p> <p><b>REF: MCCUMBER-015</b></p> <p><b>FINISH: NICKEL</b></p> <p><b>MFG: MECHANICAL NOVELTIES</b></p> <p><b>MFG DATE: CIRA 1892</b></p>	<p><b>400. BOSTON ONE-PRICE</b></p> <p><b>CLOTHING HOUSE</b></p> <p><b>RARITY: F HEIGHT: 6-3/8"</b></p> <p><b>REF: N/L</b></p> <p><b>FINISH: NICKEL</b></p> <p><b>MFG: W. ROUSE &amp; COMPANY</b></p> <p><b>MFG DATE: CIRA 1895</b></p>	<p><b>401. FIDELITY BANK</b></p> <p><b>RARITY: F HEIGHT: 4-3/4"</b></p> <p><b>REF: N/L</b></p> <p><b>FINISH: NICKEL</b></p> <p><b>MFG: ATTRIBUTED TO KYSER &amp; REX</b></p> <p><b>MFG DATE: CIRA 1880</b></p>
<p><b>402. MAE HANKE</b></p> <p><b>SAFETY BANK (BRASS)</b></p> <p><b>RARITY: F HEIGHT: 3-7/8"</b></p> <p><b>REF: N/L</b></p> <p><b>FINISH: UNFINISHED</b></p> <p><b>MFG: ARCADE</b></p> <p><b>MFG DATE: CIRA 1892</b></p>	<p><b>403. NATIONAL SAFE</b></p> <p><b>ARCADE DIAL W/TIN SIDES</b></p> <p><b>RARITY: D HEIGHT: 4-3/4"</b></p> <p><b>REF: N/L</b></p> <p><b>FINISH: NICKEL</b></p> <p><b>MFG: ARCADE</b></p> <p><b>MFG DATE: CIRA 1895</b></p>	<p><b>404. 1875 SAFE</b></p> <p><b>RARITY: F HEIGHT: 4-3/8"</b></p> <p><b>REF: N/L</b></p> <p><b>FINISH: BLACK W/ORANGE PANELS</b></p> <p><b>MFG: UNKNOWN</b></p> <p><b>MFG DATE: CIRA 1875</b></p>





<p><b>405. TRESOR IN EISEN</b></p> <p><b>RARITY: F HEIGHT: 5-3/4" (*)</b></p> <p><b>REF: N/L</b></p> <p><b>FINISH: SILVER</b></p> <p><b>MFG: UNKNOWN GERMANY</b></p> <p><b>MFG DATE: CIRA 1895</b></p> <p><b>(*)MEASURED WITHOUT FINIALS</b></p>	<p><b>406. COFFRE-FORTE</b></p> <p><b>TOUT EN FER - LG</b></p> <p><b>RARITY: F HEIGHT: 4-3/8"</b></p> <p><b>REF: N/L</b></p> <p><b>FINISH: JAPANNED W/SILVER</b></p> <p><b>MFG: UNKNOWN</b></p> <p><b>MFG DATE: CIRA 1890</b></p>	<p><b>407. BURGLAR AND</b></p> <p><b>FIREPROOF - LG</b></p> <p><b>RARITY: F HEIGHT: 4-3/8"</b></p> <p><b>REF: N/L</b></p> <p><b>FINISH: JAPANNED W/SILVER</b></p> <p><b>MFG: UNKNOWN</b></p> <p><b>MFG DATE: CIRA 1890</b></p>
<p><b>408. MANOR FUSHIMI</b></p> <p><b>(JAPAN)</b></p> <p><b>RARITY: F HEIGHT: 5-1/2"</b></p> <p><b>REF: N/L</b></p> <p><b>FINISH: BLACK</b></p> <p><b>MFG: UNKNOWN JAPAN</b></p> <p><b>MFG DATE: CIRA 1920</b></p>	<p><b>409. FUKUHANA SAVINGS BANK</b></p> <p><b>(JAPAN)</b></p> <p><b>RARITY: E HEIGHT: 4-3/4"</b></p> <p><b>REF: N/L</b></p> <p><b>FINISH: BLACK W/ ORANGE</b></p> <p><b>MFG: UNKNOWN JAPAN</b></p> <p><b>MFG DATE: CIRA 1920</b></p>	<p><b>410. AKITA BANK</b></p> <p><b>(JAPAN)</b></p> <p><b>RARITY: F HEIGHT: 4-3/4"</b></p> <p><b>REF: N/L</b></p> <p><b>FINISH: BLACK</b></p> <p><b>MFG: UNKNOWN JAPAN</b></p> <p><b>MFG DATE: CIRA 1920</b></p>
<p><b>411. THE GUARANTEE</b></p> <p><b>DEPOSIT CO.</b></p> <p><b>RARITY: E HEIGHT: 4-5/8"</b></p> <p><b>REF: N/L</b></p> <p><b>FINISH: BLACK</b></p> <p><b>MFG: UNKNOWN</b></p> <p><b>MFG DATE: CIRA 1920</b></p>	<p><b>412. SMALL DOUBLE DOOR</b></p> <p><b>WITH STARS</b></p> <p><b>RARITY: F HEIGHT: 4-3/4"</b></p> <p><b>REF: N/L</b></p> <p><b>FINISH: JAPANNED W/GOLD</b></p> <p><b>MFG: UNKNOWN</b></p> <p><b>MFG DATE: CIRA 1885</b></p>	<p><b>413. SMALL DOUBLE DOOR</b></p> <p><b>WITHOUT STARS</b></p> <p><b>RARITY: F HEIGHT: 4-3/4"</b></p> <p><b>REF: N/L</b></p> <p><b>FINISH: JAPANNED W/GOLD</b></p> <p><b>MFG: UNKNOWN</b></p> <p><b>MFG DATE: CIRA 1885</b></p>





<p><b>414. AMERICAN VAULT SAFE</b></p> <p><b>W/GRILL &amp; SMOOTH COLUMNS</b></p> <p><b>RARITY: E HEIGHT: 7-1/4"</b></p> <p><b>REF: N/L</b></p> <p><b>FINISH: NICKEL OR COPPER EP</b></p> <p><b>MFG: KLOTZ</b></p> <p><b>MFG DATE: CIRA 1913-1915</b></p>	<p><b>415. SMALL FILIGREE</b></p> <p><b>RARITY: E HEIGHT: 2-5/8"</b></p> <p><b>REF: N/L</b></p> <p><b>FINISH: BLACK W/GREEN &amp; GOLD</b></p> <p><b>MFG: KYSER &amp; REX</b></p> <p><b>MFG DATE: CIRA 1885</b></p>	<p><b>416. NATIONAL SAFE – IRON TOP</b></p> <p><b>AND BOTTOM W/TIN SIDES</b></p> <p><b>RARITY: C HEIGHT: 5"</b></p> <p><b>REF: N/L</b></p> <p><b>FINISH: BLACK W/RED &amp; GOLD</b></p> <p><b>MFG: ATTRIBUTED TO STEVENS</b></p> <p><b>MFG DATE: CIRA 1870</b></p>
<p><b>417. NATIONAL SAFE (KLD)</b></p> <p><b>LG W/EAGLE &amp; HANDLES</b></p> <p><b>RARITY: E HEIGHT: 4-5/8"</b></p> <p><b>REF: N/L</b></p> <p><b>FINISH: BLACK W/GREEN &amp; GOLD</b></p> <p><b>MFG: ATTRIBUTED TO STEVENS</b></p> <p><b>MFG DATE: CIRA 1892</b></p>	<p><b>418. IXL - MED</b></p> <p><b>W/PIERCED SIDES</b></p> <p><b>RARITY: E HEIGHT: 3-5/8"</b></p> <p><b>REF: N/L</b></p> <p><b>FINISH: NICKEL OR COPPER EP</b></p> <p><b>MFG: KYSER &amp; REX</b></p> <p><b>MFG DATE: CIRA 1895</b></p>	<p><b>419. SECURITY SAFE DEPOSIT</b></p> <p><b>SMALL W/SIDE SYMBOLS</b></p> <p><b>RARITY: F HEIGHT: 4-5/8"</b></p> <p><b>REF: N/L</b></p> <p><b>FINISH: BLACK W/GOLD DETAIL</b></p> <p><b>MFG: KYSER &amp; REX</b></p> <p><b>MFG DATE: CIRA 1885</b></p>
<p><b>420. MEDALLION SAFE (KLD)</b></p> <p><b>MED-RND TOP, TIN &amp; HANDLE</b></p> <p><b>RARITY: D HEIGHT: 5-5/8"</b></p> <p><b>REF: N/L</b></p> <p><b>FINISH: NICKEL</b></p> <p><b>MFG: WING &amp; PARSONS</b></p> <p><b>MFG DATE: CIRA 1910</b></p>	<p><b>421. MEDALLION SAFE - CAMEO</b></p> <p><b>MED-RND TOP, TIN &amp; HANDLE</b></p> <p><b>RARITY: D HEIGHT: EST. 5-5/8"</b></p> <p><b>REF: N/L</b></p> <p><b>FINISH: COPPER EP</b></p> <p><b>MFG: WING &amp; PARSONS</b></p> <p><b>MFG DATE: CIRA 1910</b></p>	<p><b>422. PARK BANK</b></p> <p><b>RARITY: F HEIGHT: 4-1/2"</b></p> <p><b>REF: N/L</b></p> <p><b>FINISH: BLACK W/RED &amp; GOLD</b></p> <p><b>MFG: ATTRIBUTED TO STEVENS</b></p> <p><b>MFG DATE: CIRA 1875</b></p>





423. STILLWELL CANNONBALL  
DIME SAVINGS 221 N 12<sup>TH</sup> ST  
RARITY: E HEIGHT: 3-1/8"  
REF: N/L  
FINISH: PAINTED SILVER  
MFG: UNKNOWN  
MFG DATE: CIRA 1902

424. STILLWELL CANNONBALL  
QUAKER SOCIETIES 221 N 12<sup>TH</sup> ST  
RARITY: E HEIGHT: 3-1/8"  
REF: N/L  
FINISH: PAINTED RED  
MFG: UNKNOWN  
MFG DATE: CIRA 1902

425. \_\_\_\_\_  
\_\_\_\_\_  
RARITY: \_\_\_\_ HEIGHT: \_\_\_\_  
REF: \_\_\_\_\_  
FINISH: \_\_\_\_\_  
MFG: \_\_\_\_\_  
MFG DATE: \_\_\_\_\_

426. \_\_\_\_\_  
\_\_\_\_\_  
RARITY: \_\_\_\_ HEIGHT: \_\_\_\_  
REF: \_\_\_\_\_  
FINISH: \_\_\_\_\_  
MFG: \_\_\_\_\_  
MFG DATE: \_\_\_\_\_

427. \_\_\_\_\_  
\_\_\_\_\_  
RARITY: \_\_\_\_ HEIGHT: \_\_\_\_  
REF: \_\_\_\_\_  
FINISH: \_\_\_\_\_  
MFG: \_\_\_\_\_  
MFG DATE: \_\_\_\_\_

428. \_\_\_\_\_  
\_\_\_\_\_  
RARITY: \_\_\_\_ HEIGHT: \_\_\_\_  
REF: \_\_\_\_\_  
FINISH: \_\_\_\_\_  
MFG: \_\_\_\_\_  
MFG DATE: \_\_\_\_\_

426. \_\_\_\_\_  
\_\_\_\_\_  
RARITY: \_\_\_\_ HEIGHT: \_\_\_\_  
REF: \_\_\_\_\_  
FINISH: \_\_\_\_\_  
MFG: \_\_\_\_\_  
MFG DATE: \_\_\_\_\_

427. \_\_\_\_\_  
\_\_\_\_\_  
RARITY: \_\_\_\_ HEIGHT: \_\_\_\_  
REF: \_\_\_\_\_  
FINISH: \_\_\_\_\_  
MFG: \_\_\_\_\_  
MFG DATE: \_\_\_\_\_

428. \_\_\_\_\_  
\_\_\_\_\_  
RARITY: \_\_\_\_ HEIGHT: \_\_\_\_  
REF: \_\_\_\_\_  
FINISH: \_\_\_\_\_  
MFG: \_\_\_\_\_  
MFG DATE: \_\_\_\_\_





## ADDENDUM NOTES

387. See note for SBB #026.

388. An advertisement from 1893 lists the address for Jacob Wronski as 555 Warren Street, Hudson, N.Y. Prior to 1887 the business was located at 313 Warrant Street.

389. The Kingston, NY store was opened in 1895. Louis Elting & Sons failed in 1902. They were succeeded by the Elting Clothing Company which began May 30th, 1902.

390. The Golden Eagle Clothing Store of Wichita, Kansas filed for bankruptcy in September of 1914.

391. Similar to SBB #064. The difference being the presence of quotation marks on the front.

396. Similar to SBB #338. The difference being the name on the front.

397. Another name variation for SBB #234.

399. Patent No. 683,396 (assigned September 24, 1901) applies.

402. Mae Hanke (January 27, 1879 – November 4, 1951) was the daughter of Freeport, Illinois Alderman and Superintendent of Street Herman F. Hanke. She married William Kleckler, on March 9, 1909.

403. Similar to SBB #020. The difference is the stamped design on the sides. See note for SBB #020.

404. Similar to SBB #237. The difference is the year on the front of the bank.

406. Similar to SBB #041, but larger. See note for SBB #041.

407. Similar to SBB #042, but larger.

408. Front: Savings Bank. Back: Public Interest Incorporated Association (PIIA) Manor Fushimi. Made for the 30<sup>th</sup> anniversary of the founding. Located in Kyoto, Japan.

409. Front: Fukuoka Savings Bank. Located in the Fukuoka prefecture in Kyushu, Japan.

410. Front: Akita Bank. Back: Tokyo Hashizume. Made by Enshuya

414. Similar to SBB #366. Difference is in the columns that straddle the door. Design Patent No. 39,660 (assigned November 3, 1908) applies.

416. Similar to SBB #242. Difference is in the top.

418. See note for SBB #264. Difference is with the sides. Design Patent No. 12,357 (assigned July 12, 1881) applies.

420. Similar to SBB #169, but with KLD. Design Patent No. (assigned 38,810 September 17, 1907) applies.

## ADDENDUM NOTES (CONT.)

421. Similar to SBB #171 (Variation Two), but shorter. Design Patent No. (assigned 38,810 September 17, 1907) applies.

423. See note for SBB #131. Patent No. 707,875 (assigned August 26, 1902) applies.

424. See note for SBB #131. Patent No. 707,875 (assigned August 26, 1902) applies.

## OTHER KNOWN EXAMPLES NOT PICTURED

REGENT MFG COMPANY: HARRIS CLOTHING CO (HUNTINGTON, IN)

REGENT MFG COMPANY: JACOBI BRO'S & MACK CLOTHIERS (GALENSBURG, IL)

REGENT MFG COMPANY: P.A. STERN ONE PRICE CLOTHIER (MARSHALLTOWN, IA)

SIMILAR TO SBB #115: BANK OF COMMERCE WITH KLD

SIMILAR TO SBB #157: BANK OF LEROY

SIMILAR TO SBB #225: CUPID – LG WITH KLD

SIMILAR TO SBB #373: HORSE HEAD SAFE - MED WITH KLD

SIMILAR TO SBB #374: HORSE HEAD SAFE - LG WITH KLD

SIMILAR TO SBB #404: STILLWELL CANNONBALL - 60TH ANNIVERSARY WHARTON ST

## INDEX CORRECTIONS

ADD: Star 048

ADD: Star Safe 100-102, 202, 256

REVISE: State Safe 014-016, ~~048, 100-102, 202, 256~~