

A PRIMER SERIES FOR SAFE BANK COLLECTORS

KLOTZ SAFES

Prepared by: Michael Holz

Rev 2 / 5-2015



INTRODUCTION

- Since the Iron Safe Book (ISB) was issued by the Still Bank Collectors Club in 1991, several examples have since surfaced that were not previously catalogued.
- This presentation was prepared to provide clarification and guidance for their identification.
- It is believed that all Klotz Safes were produced between 1913 and 1918. They were made by the **Klotz Manufacturing Company** of Chicago who was later sold in 1915 to form the **Art Toy Makers Company**. Their successor continued to produce 'Klotz' toy safes for a short time before pursuing other interests.

MEASUREMENTS

- Only height measurements were taken to streamline identification.
- Height dimensions contained herein do not include handles or protruding assembly hardware.
- Measurements made to the closest 1/16"
- Some pairings with ISB examples were made visually as there were differences noted with some of the measurements, even when taken using the methods noted in the front of the ISB book.

NUMBER OF PIECE PARTS

- The count for the Number of Piece Parts excludes handles, locks, coin catches and assembly hardware. Grills are included.
- Different examples, where the difference is the presence of a handle or not, will typically have the same number of piece parts.
- Different examples, where the difference is steel sides –vs- iron sides, will typically have two fewer piece parts.

TOY SAFE-BANK PATENT FILED APRIL 23, 1908

UNITED STATES PATENT OFFICE.

LOUIS KRAJESKI, OF CHICAGO, ILLINOIS.

DESIGN FOR A TOY BANK.

No. 39,660.

Specification for Design.

Patented Nov. 3, 1908.

Application filed April 23, 1908. Serial No. 428,879. Term of patent 7 years.

To all whom it may concern:

Be it known that I, LOUIS KRAJESKI, a citizen of the United States, residing at Chicago, in the county of Cook and State of Illinois, have invented a new, original, and ornamental Design for Toy Banks; and I do hereby declare the following to be a specification of the same, reference being had to the accompanying drawing, forming a part thereof.

Figure 1 is a front elevation of the bank.
Fig. 2 is a side elevation.

I claim:

The ornamental design for a toy bank, as shown.

LOUIS KRAJESKI.

Witnesses:

MARIE PERKINS,
H. G. BATCHELOR.

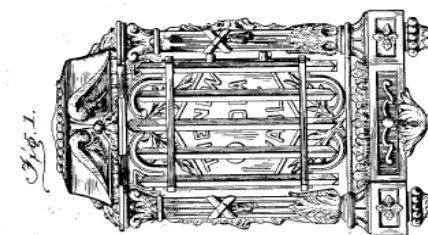
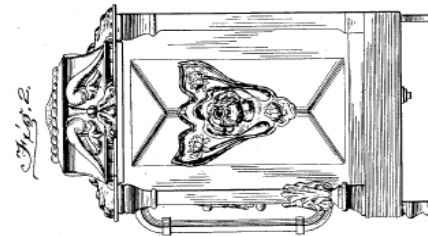
DESIGN.

L. KRAJESKI.
TOY BANK.

APPLICATION FILED APR. 23, 1908.

39,660.

Patented Nov. 3, 1908.



WITNESSES:

Marie Perkins
H. G. Batchelor

INVENTOR

Louis Krajewski.

BY

Wm. B. Thomas, Jr.
Attorney

Metal Bank.



Nicely nickel plated. Highly embossed and polished. Hinged door over lock. Complete with key. Size, $5\frac{1}{2} \times 4 \times 3\frac{1}{4}$ in. Shpg. wt., 3 lbs.

No.

69T8723 39c

Price.....

Same as above, but smaller. Size, $4\frac{1}{2} \times 3\frac{3}{4} \times 3\frac{1}{2}$ inches. Shipping wt., 2 lbs.

69T8724 21c

Price.....

Iron Bank.

Bronze finished. Combination lock, hinged door. Size, $3\frac{3}{4} \times 2\frac{7}{8} \times 3$ inches. Shipping wt., $1\frac{1}{4}$ pounds.

No. **69T8725 10c**

Price.....



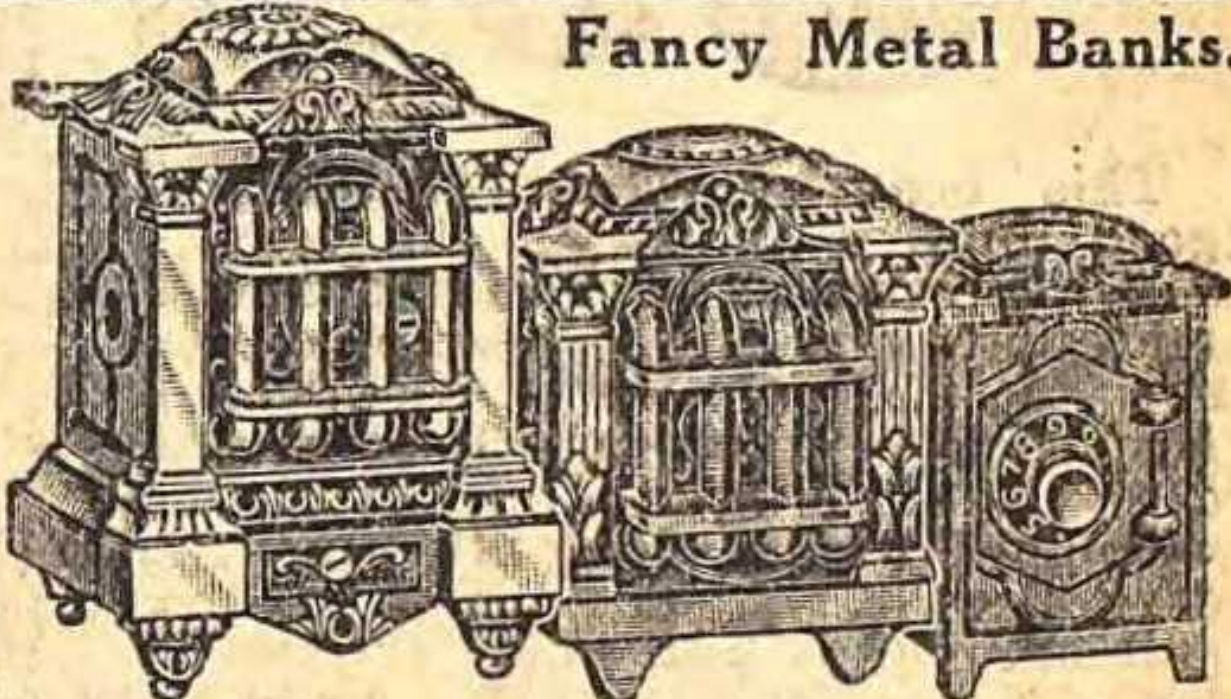
**SEARS
CATALOG**

FALL - 1914

SEARS
CATALOG

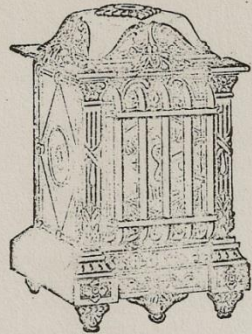
FALL - 1915

Fancy Metal Banks.



The image shows three ornate metal banks. The largest one on the left is nickel plated with embossed details. The middle one is smaller and also nickel plated. The smallest one on the right is bronze finished and has a combination lock on its hinged door.

<p>No. 69D8723 Nicely nickel plated. Highly embossed and polished. Complete with key. Size, $5\frac{1}{2} \times 4 \times 3\frac{1}{4}$ inches. Shipping wt., $2\frac{1}{4}$ lbs. Price.... 39c</p>	<p>No. 69D8724 Same as No. 69D8723, but smaller. Size, $4\frac{1}{2} \times 3\frac{3}{4} \times 3\frac{1}{2}$ in. Shipping wt., $1\frac{1}{2}$ lbs. Price.. 21c</p>	<p>No. 69D8725 Bronze finished. Combination lock, hinged door. Size, $3\frac{3}{4} \times 2\frac{7}{8} \times 3$ inches. Shipping wt., 14 oz. Price.... 10c</p>
---	---	--

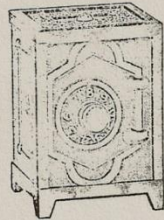


Finished in Brass or Nickel
50c. Seller

“ARTSTEEL” DOLL FURNITURE
TOPS “AEROWHIRL” TOPS

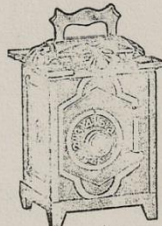
FIRELESS TORPEDO CANES

Holiday Catalogue on Request

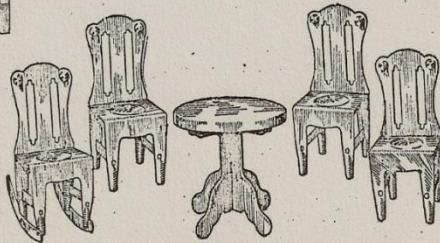


Finished in White Nickel, Brass, Copper or Nickel
10c. Seller

*30 Styles and Sizes of Banks and Safes
Combination and Locks*



Finished in Brass, Copper or Nickel
15c. Seller



Complete Furniture Sets in colors and sizes for Parlor, Bedroom, Dining Room and Kitchen
Sells at from 10c. to 50c. each set

Makers of Stamped and Cast Metal Toys and Mechanical Playthings.

M. E. HARKER, Sales Director
141-145 W. AUSTIN AVE.
CHICAGO



PLAYTHINGS MAGAZINE

AUGUST – 1915

Advertisement for the new company

‘American Art Toy Makers’

KEY LOCK – IRON SIDES – FLUTED COLUMNS



**KLOTZ SAFE #1
ISB #313
Height 7-1/8"
(LARGE SIZE - 8 PIECES)**

KEY LOCK – IRON SIDES – FLUTED COLUMNS



**KLOTZ SAFE #2
ISB #312
Height 5-5/16”
(MEDIUM SIZE - 8 PIECES)**

KEY LOCK – IRON SIDES – FLUTED COLUMNS



**KLOTZ SAFE #3
ISB – UNLISTED
Height 4-1/2”
(SMALL SIZE - 8 PIECES)**

KEY LOCK – IRON SIDES – SMOOTH COLUMNS

KNOWN TO EXIST

* NEED BETTER EXAMPLE *

MEDIUM SIZE

KEY LOCK DOOR

IRON SIDES

SMOOTH COLUMNS

* FRONT *

**KLOTZ SAFE #4
ISB – UNLISTED
Height 5-5/16”
(MEDIUM SIZE – 8 PIECES)**

DOES THIS EXIST?

* NEED EXAMPLE *

SMALL SIZE

KEY LOCK DOOR

IRON SIDES

SMOOTH COLUMNS

* FRONT *

**KLOTZ SAFE #5
ISB – UNLISTED
Height 4-1/2”
(SMALL SIZE – 8 PIECES)**

KEY LOCK – STAMPED SIDES – FLUTED COLUMNS



**KLOTZ SAFE #6
ISB – UNLISTED
Height 7-1/8”
(LARGE SIZE - 6 PIECES)**

KEY LOCK – STAMPED SIDES – FLUTED COLUMNS



**KLOTZ SAFE #7
ISB – UNLISTED
Height 5-5/16”
(MEDIUM SIZE - 6 PIECES)**

KEY LOCK – STAMPED SIDES – FLUTED COLUMNS



**KLOTZ SAFE #8
ISB #311
Height 4-1/2"
(SMALL SIZE - 6 PIECES)**

KEY LOCK – STAMPED SIDES – SMOOTH COLUMNS



KLOTZ SAFE #9
ISB – UNLISTED
Height 5-5/16”
(MEDIUM SIZE - 6 PIECES)



KLOTZ SAFE #10
ISB – UNLISTED
Height 4-1/2”
(SMALL SIZE - 6 PIECES)

COMBO LOCK – STAMPED SIDES – FLUTED COLUMNS



KLOTZ SAFE #11
ISB – UNLISTED
Height 5-5/16"
(MEDIUM SIZE - 6 PIECES)



KLOTZ SAFE #12
ISB – UNLISTED
Height 4-1/2"
(SMALL SIZE - 6 PIECES)

COMBO LOCK-STAMPED SIDES-SMOOTH COLUMNS

DOES THIS EXIST?

* NEED EXAMPLE *

MEDIUM SIZE

COMBO LOCK DOOR

STAMPED SIDES

SMOOTH COLUMNS

* FRONT *



**KLOTZ SAFE #13
ISB - UNLISTED
Height 5-5/16"
(MEDIUM SIZE - 6 PIECES)**

**KLOTZ SAFE #14
ISB #310
Height 4-1/2"
(SMALL SIZE - 6 PIECES)**

KLOTZ SAFE WITHOUT GRILL



KLOTZ SAFE #15
ISB #309
Height 4-1/2"
(SMALL SIZE – 5 PIECES)

DOES THIS EXIST?

* NEED EXAMPLE *

SMALL SIZE

COMBO LOCK DOOR

STEEL SIDES

SMOOTH COLUMNS

* FRONT *

KLOTZ SAFE #16
ISB - UNLISTED
Height 4-1/2"
(SMALL SIZE – 5 PIECES)

KLOTZ SAFE WITHOUT GRILL



KLOTZ SAFE #17
ISB #308 (5 PIECES)
Height 3-13/16"
(SMALLER SIZE – 5 PIECES)
NOTE: Found both with & without handle

KLOTZ SAFE WITHOUT GRILL



**KLOTZ SAFE #18
ISB #307
Height 3-7/16"
(SMALLEST SIZE – 5 PIECES)**

KLOTZ SAFE #18 – TOP & BOTTOM



NOTE
TOP design unique to KLOTZ safes



NOTE
BOTTOM design unique to KLOTZ safes

Base plate is interchangeable between
#17 (dome top) and #18 (flat top)

#17 uses the off-center hole
#18 uses the centered hole

For recommended additions
or changes
contact

Michael Holz

MBHOLZ@ZOOMINTERNET.NET

