

HENRY C. HART

THE MAN, HIS BUSINESSES, AND THE BANKS

Prepared by: Michael Holz

Delivered by: Dr Z

A NOTE ON IDENTIFICATION

- As no H.C. HART CATALOGs or advertisements have surfaced yet, and few banks are marked with their name, it is with some speculation that many of the banks that follow are attributed to them.
- Thorough review and comparison of construction, lock, and finish to known H.C. HART banks has led to their inclusion in this presentation.

'TIME IS MONEY'

CLOCK BANK



Marked
'H C HART MFG CO.'
on the clock face

Patent # D16146
issued July 7, 1885
applies

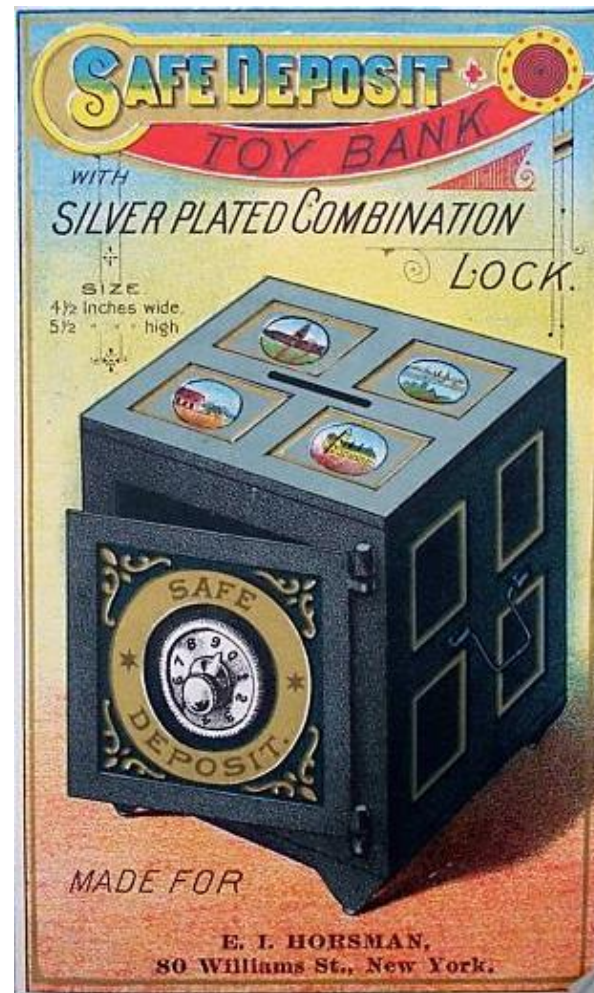
SAFE DEPOSIT BANK

VERSION 1 -SQUARE EDGES/HANDLES



Marked 'HENRY C HART MFG CO.'

Patent # 317,771 issued May 12, 1885 applies.



SAFE DEPOSIT BANK

VERSION 2 -ROUNDED EDGES/HANDLES



Marked 'HENRY C HART MFG CO.' Found with or without city scenes on top.
Countless variety of side panel stencils.

SAFE DEPOSIT BANK

VERSION 2 -ROUNDED EDGES/NO HANDLES

Marked 'HENRY C HART MFG CO.'

Further identification of other banks is based on the following characteristics found in this and other marked HART banks:

- Dial
- Lock Mechanism
- Brass keeper on upper hinge to hold door
- Design of the foot



'FORTUNES ARE MADE BY PENNIES SAVED'

SAFE DEPOSIT



Unmarked, but shares the following characteristics with known HART banks:

- Dial
- Similar Lock Mechanism
- Brass keeper on upper hinge to hold door
- Design of the foot

ROYAL SAFE DEPOSIT – VERSION 1



Unmarked, but shares the following characteristics with known HART banks:

- Dial
- Similar Lock Mechanism
- Brass keeper on upper hinge to hold door
- Design of the foot

ROYAL SAFE DEPOSIT – VERSION 2



Difference between VERSION 1 and VERSION 2 is the door.

There is a seemingly endless variety portraits applied to these ROYAL safes.

ROYAL SAFE – NICKEL FINISH



STANDARD SAFE DEPOSIT

Unmarked.

The dial and lock mechanism is identical to that on the ROYAL SAFE DEPOSIT.

This is actually two banks in one separated by a vertical partition.

Both coin slots have a spring fixed across the opening on the inside to prevent the coins from being shaken out.



IMPERIAL SAFE DEPOSIT



Like the STANDARD SAFE DEPOSIT bank in the previous slide, the coin slot has a spring fixed across the opening on the inside to prevent the coins from being shaken out.

The feet are also similar to other known HART banks.

NATIONAL & JUNIOR SAFE DEPOSIT BANKS

There are two larger
'NATIONAL' and two
smaller 'JUNIOR' SAFE
DEPOSIT banks.

All employ the same
design with a spring fixed
across the opening on the
inside to prevent the coins
from being shaken out.



ADVERTISING



Bank on right labeled: NO. 1002 PROPERTY OF COLUMBIAN ECONOMIC S&L ASSN.
Other institution examples include 'THE BANK OF LEROY'



Bank on right labeled: NO. 503 PROPERTY OF THE SAVING FUND CO.

SAVINGS CHEST BANK

MOORE # 948



MOORE attributes this bank to 'Van Elysen-Henstep' of Detroit, most likely because their name is in the corner of the catalog cut found in advertisements.

They were an engraving company ... not a manufacturer of iron banks or toys.

Note the similarity of the foot on this bank to known HART safes

JEWEL CHEST / COFFIN BANK

MOORE # 952



Note this lock dial is identical to that on HART's small SAFE DEPOSIT bank.

1893 WORLDS FAIR SAFE



Unmarked.

Design PATENT #22,419 issued
May 9, 1893 to EUGENE CHAREST
of DETROIT, MI.

Lock mechanism and foot design are
similar to other known HART banks.

1893 WORLDS FAIR SAFE

FINISH VARIATIONS



1893 SAFE BANK IS SERIALIZED



Roman numerals are filed into the base of the bank.
This example (viewed upside down) is 'XII' for #12.
Recent example sold at 6/7/14 RSL Auction labeled 'XXXXI' for #41

1893 SAFE BANK SIDE MEDALLIONS – LEFT SIDE



THOMAS. W. PALMER

Head of the National Exposition
Commission for the 1893
World's Fair.

1893 SAFE BANK SIDE MEDALLIONS – RIGHT SIDE



GROVER CLEVELAND

President of the United States
at the time of the 1893 World's
Fair.

1893 SAFE BANK SIDE MEDALLIONS – BACK SIDE



CHRISTOPHER COLUMBUS

SMYTH X-RAY BANK (FREQUENTLY ATTRIBUTED TO HART)



The Smyth X-Ray Bank was patented May 31, 1898 by Charles Smyth of Dayton, Ohio, and he assigned one half to Lena Hyman, also of Dayton

Set the coin in the holder and look into the eye piece. A series of 4 angled mirror's, like a double periscope, creates the optical illusion that the coin is transparent.

PRESTO BANK



Paper label on the bottom reads: CLARK HARDWARE CO. Detroit, MI

The bank was designed and patented by H.C. Hart and J.W. Cross of Detroit, Michigan, April 8, 1884. Assigned patent #296,689.

The verse on the viewing section end is as follows: "We offer aid To all who strive To make one penny Twenty-five".

When the lever is pulled the penny automatically drops into the base section and in its place there appears to be a twenty-five cent piece. This gives the effect of the penny magically changing into a quarter.

... THE ...

STANDARD SAFES,

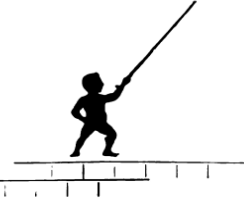
... FOR USE BY ...

**BANKS AND
SAVINGS
INSTITUTIONS,**

... AS ...

Home Depositorys of Savings.

THIS CIRCULAR ILLUSTRATES AND
DESCRIBES THE

 **STANDARD
SAFES,**

MADE ESPECIALLY FOR THIS PURPOSE,
BY

**THE HENRY C. HART MFG.
COMPANY.**

DETROIT, MICH.

Published in 1892

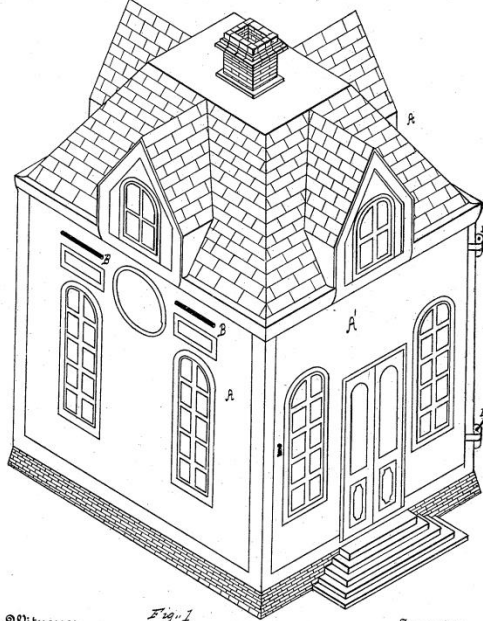
(No Model.)

2 Sheets—Sheet 1

W. H. ELLIS.
SAVINGS BANK.

No. 458,047.

Patented Aug. 18, 1891.



Witnesses
Charles B. Lottrop
Henry A. Lottrop

Inventor
Waring Henry Ellis

THE SMITHSONIAN INSTITUTION, WASHINGTON, D. C.

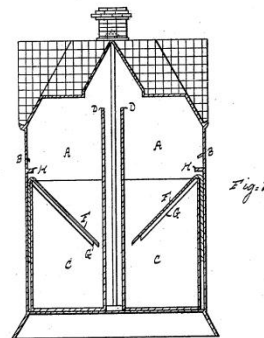
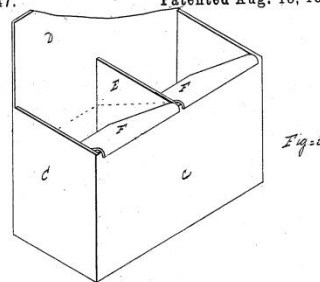
(No Model.)

2 Sheets—Sheet 2.

W. H. ELLIS.
SAVINGS BANK.

No. 458,047.

Patented Aug. 18, 1891.



Witnesses
Charles B. Lottrop
Henry A. Lottrop

Inventor
Waring Henry Ellis

THE SMITHSONIAN INSTITUTION, WASHINGTON, D. C.

HOME DEPOSITORY OF SAVINGS



EARLY VERSION –1889 to 1890

Distinguishing Characteristics: Pointed Dormers, no bricks, padlock & hasp access, labeled on front and back, no patent markings.

Dimensions: 10-1/2" Tall x 6-7/16" Wide x 8-1/4" Deep

Savings Institutions Represented:

Home Savings Bank – Detroit, Michigan

HOME DEPOSITORY OF SAVINGS



MIDDLE VERSION – 1890 to 1891

Distinguishing Characteristics: Pointed Dormers, bricks, padlock & hasp access, labeled on panel opposite access, marked "PATENTS PENDING" on side.

Dimensions: 10-1/2" Tall x 6-1/4" Wide x 8-1/8" Deep

Savings Institutions Represented:

Home Savings Bank – Detroit, Michigan

Central Savings Bank – Detroit, Michigan (city not on bank)

Colorado Savings Bank – Denver, Colorado

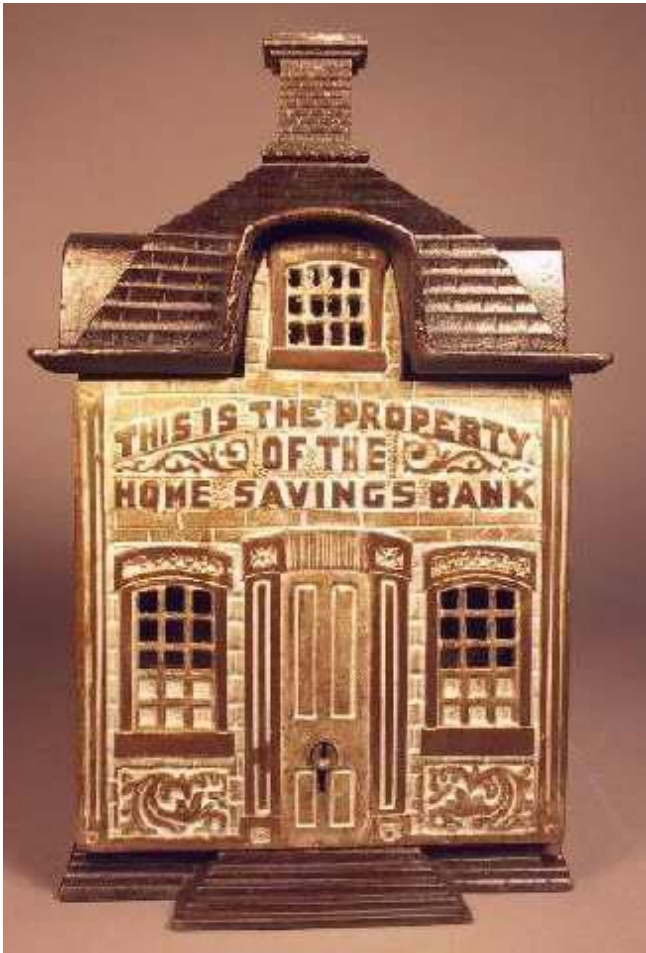
Equitable Loan & Savings Ass'n – Dayton, Ohio

Frank W. Hubbard & Co. – Bad Axe, Michigan

Mercantile Loan Assn – Chatanooga, Tennessee

People's Savings Bank – Grand Rapids, Michigan

HOME DEPOSITORY OF SAVINGS



LATE VERSION – 1891 to 1895 (approx)

Distinguishing Characteristics: Arched Dormers, bricks, key lock access, labeled on panel with access, marked "PATENT AUG 18.91" on base under steps.

Dimensions: 10-7/8" Tall x 6-1/4" Wide x 8-1/8" Deep

Savings Institutions Represented:

Home Savings Bank – Detroit, Michigan

Empire State Savings Bank – Buffalo, NY

International Loan & Trust Co. – Kansas City, Missouri

Ohio Mutual Building & Loan Co. – Toledo, Ohio*

St. Clair County Savings Bank Union – Port Huron, Michigan*

* (city not on bank)

HOUSEHOLD SAFES

(NO COIN SLOT)

