

A PRIMER SERIES FOR SAFE BANK COLLECTORS

COIN DEPOSIT BANK SAFES

Prepared by: Michael Holz

Rev 2 / 6-2016



INTRODUCTION

- Since the Iron Safe Book (ISB) was issued by the Still Bank Collectors Club in 1991, several examples have since surfaced that were not previously catalogued.
- This presentation was prepared to provide clarification and guidance for their identification.
- The **Grey Iron Casting Company** of Mount Joy, PA produced this series of Coin Deposit Bank Safes starting in 1902 until at least 1929.

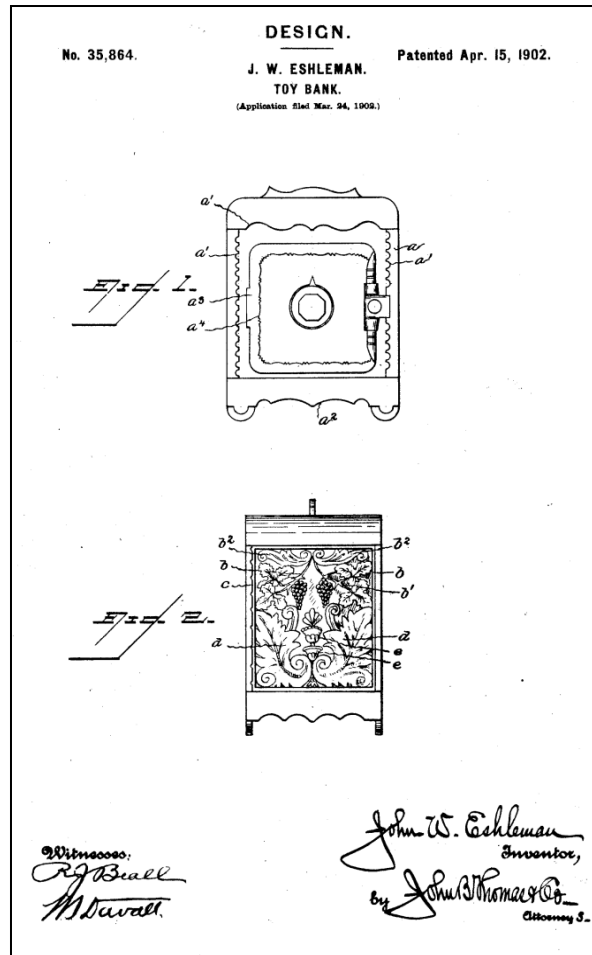
MEASUREMENTS

- Only height measurements were taken to streamline identification.
- Height dimensions contained herein do not include handles or protruding assembly hardware.
- Measurements made to the closest 1/16"
- Some pairings with ISB examples were made visually as there were differences noted with some of the measurements, even when taken using the methods noted in the front of the ISB book.

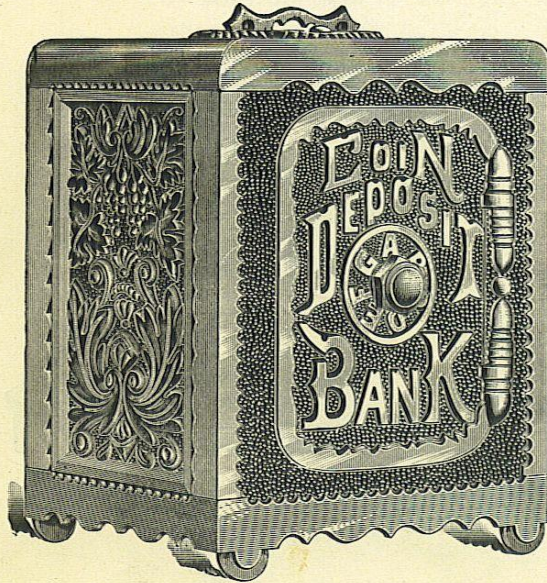
NUMBER OF PIECE PARTS

- The count for the Number of Piece Parts excludes handles, locks, coin catches and assembly hardware. Grills are included.
- Different examples, where the difference is the presence of a handle or not, will typically have the same number of piece parts.
- Different examples, where the difference is steel sides –vs- iron sides, will typically have two fewer piece parts.

TOY SAFE-BANK PATENT FILED MARCH 24, 1902



Coin Deposit Bank.



- No. 250. Size $4\frac{1}{2}$ ins. high, 3 ins. wide, $2\frac{1}{2}$ ins. deep. Packed three in a box, half gross in a case. Weight of case 130 pounds. Per gross..... \$ 40.00 2112
- No. 500. Size $5\frac{1}{4}$ ins. high, $4\frac{1}{4}$ ins. wide, $3\frac{1}{2}$ ins. deep. Packed one in a box, one-fourth gross in a case. Weight of case 275 pounds. Per gross..... 86.66 480
- No. 1000. Size $6\frac{3}{4}$ ins. high, $5\frac{1}{4}$ ins. wide, $4\frac{1}{2}$ ins. deep. Packed one in a box, one-sixth gross in a case. Weight of case 170 pounds. Per gross.... 186.66 858

Entirely new design; highly polished and nicked; a beautiful safe with good combination.

Discount _____ per cent.

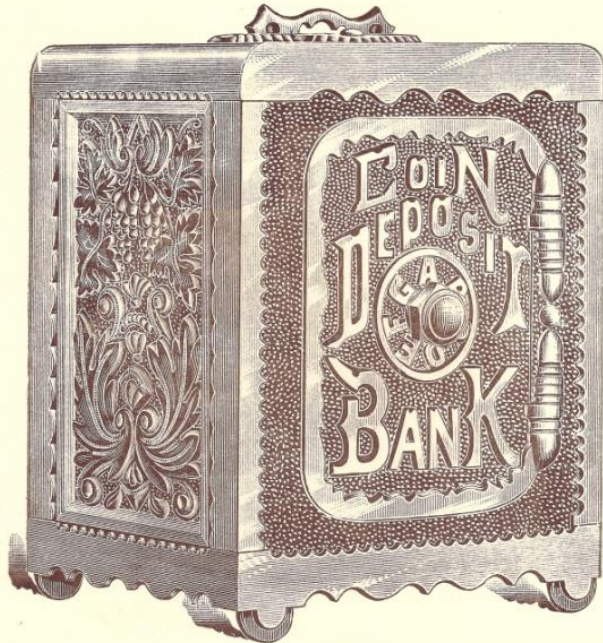
Grey Iron Casting Company

1904 Catalog

Lists 3 sizes
of

Coin Deposit Bank Safes

COIN DEPOSIT BANK



- No. 250. Size $4\frac{1}{2}$ ins. high, 3 ins. wide, $2\frac{1}{2}$ ins. deep. Packed three in a box, half gross in a case. Weight of case 130 pounds, per gross.
- No. 255. Same as No. 250 but copper oxidized, per gross.
- No. 260. Same as No. 250 with sheet iron back and sides.
- No. 265. Same as No. 260 but copper oxidized, per gross.
- No. 500. Size, $5\frac{1}{4}$ ins. high, $4\frac{1}{4}$ ins. wide, $3\frac{1}{2}$ ins. deep. Packed one in a box, one-fourth gross in a case. Weight of case 275 pounds, per gross.
- No. 505. Same as No. 500 but copper oxidized, per gross.
- No. 510. Same as No. 500 but sheet iron back and sides, per gross.
- No. 515. Same as No. 510 but copper oxidized, per gross.
- No. 1000. Size, $6\frac{3}{4}$ ins. high, $5\frac{1}{4}$ ins. wide, $4\frac{1}{2}$ ins. deep. Packed one in a box, one-sixth gross in a case. Weight of case, 170 pounds, per gross.
- No. 1005. Same as No. 1000 but copper oxidized, per gross.

Grey Iron Casting Company

1910 Catalog

Lists 3 sizes of

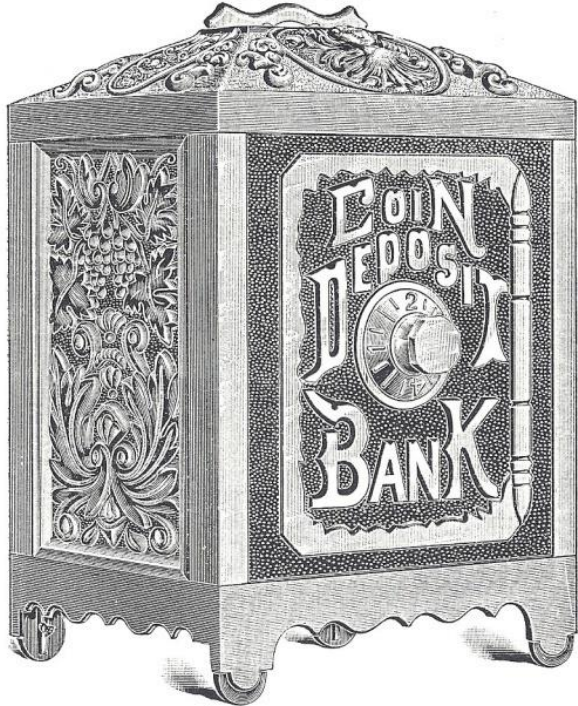
Coin Deposit Bank Safes

**Both Small & Medium sizes
offered with cast iron sides
or sheet iron sides**



THE GUARANTEED LINE
COIN DEPOSIT BANKS.

Combination Lock.



Handsome new design. Highly polished and finished.
A high grade safe with accurate combination.

No. 275.	Nickel Plated.	} 4¾ ins. high. 3 ins. wide. 2½ ins. deep.
No. 280.	Copper Oxidized.	
No. 285.	Nickel Plated.	Same as No. 275, but with steel sides and back.
No. 290.	Copper Oxidized.	Same as No. 280, but with steel sides and back.
		100 lbs. per case.
No. 525.	Nickel Plated.	} 5½ ins. high. 4¼ ins. wide. 3½ ins. deep.
No. 530.	Copper Oxidized.	
		1 in a box. ¼ gross in a case. 140 lbs. per case.
No. 535.	Nickel Plated.	Same as No. 525, but with steel sides and back.
No. 540.	Copper Oxidized.	Same as No. 530, but with steel sides and back.
		100 lbs. per case.
No. 2000.	Nickel Plated.	} 7 ins. high. 5¼ ins. wide. 4½ ins. deep.
No. 2005.	Copper Oxidized.	
		1 in a box. ⅓ gross in a case. 165 lbs. per case.

Grey Iron Casting Company

1915 Catalog

*** NEW DESIGN ***

**Lists 3 sizes
of
Coin Deposit Bank Safes**

**Both Small & Medium sizes
offered with cast iron sides
or steel sides**

ORIGINAL DESIGN – RIVET PLATE HOLDS DOOR



COIN DEPOSIT BANK #1
ISB - UNLISTED
Height 4-1/16"
(SMALL SIZE - 8 PIECES)

NOTE RIVETED PLATE HOLDS DOOR AND THE SCALLOPED EDGES ON ALL FOUR SIDES

ORIGINAL DESIGN – RIVET PLATE HOLDS DOOR



COIN DEPOSIT BANK #2

ISB #150

Height 5-3/16"

(MEDIUM SIZE - 8 PIECES)

NOTE RIVETED PLATE HOLDS DOOR AND THE SCALLOPED EDGES ON ALL FOUR SIDES

ORIGINAL DESIGN – RIVET PLATE HOLDS DOOR



COIN DEPOSIT BANK #3
ISB - UNLISTED
Height 6-11/16"
(LARGE SIZE - 8 PIECES)

NOTE RIVETED PLATE HOLDS DOOR AND SHAPE IS MORE ROUND THAN LATER VERSION

LATER DESIGN – FLAT TOP



COIN DEPOSIT BANK #4

ISB #148

Height 4-1/16"

(SMALL SIZE - 7 PIECES)

NOTE STRAIGHT EDGES ON ALL FOUR SIDES

LATER DESIGN – FLAT TOP



COIN DEPOSIT BANK #5
ISB #149
Height 5-3/16"
(MEDIUM SIZE - 7 PIECES)
NOTE STRAIGHT EDGES ON ALL FOUR SIDES

LATER DESIGN – FLAT TOP



COIN DEPOSIT BANK #6

ISB #151

Height 6-11/16"

(LARGE SIZE - 7 PIECES)

NOTE DOOR IS MORE SQUARE THAN ORIGINAL DESIGN

LATER DESIGN – FLAT TOP – STEEL SIDES



COIN DEPOSIT BANK #7
ISB - UNLISTED
Height 5-3/16"
(MEDIUM SIZE - 5 PIECES)



COIN DEPOSIT BANK #8
ISB - UNLISTED
Height 4-1/16"
(SMALL SIZE - 5 PIECES)

LATER DESIGN – DOMED TOP



**COIN DEPOSIT BANK #9
ISB - UNLISTED
Height 4-1/4"
(SMALL SIZE - 7 PIECES)**

LATER DESIGN – DOMED TOP



**COIN DEPOSIT BANK #10
ISB #147
Height 5-3/4"
(MEDIUM SIZE - 7 PIECES)**

LATER DESIGN – DOMED TOP



**COIN DEPOSIT BANK #11
ISB #146
Height 7-1/2"
(LARGE SIZE - 7 PIECES)**

LATER DESIGN – DOMED TOP – STEEL SIDES



COIN DEPOSIT BANK #12
ISB - UNLISTED
Height 5-3/4"
(MEDIUM SIZE - 5 PIECES)



COIN DEPOSIT BANK #13
ISB #145
Height 4-1/4"
(SMALL SIZE - 5 PIECES)

LATER DESIGN – FLAT TOP – STEEL SIDES VARIATION



THIS BANK IS A CROSS
BETWEEN
THE TOP
COIN DEPOSIT BANK #8
AND
THE BOTTOM
COIN DEPOSIT BANK #14

COIN DEPOSIT BANK #14
ISB - UNLISTED
Height 4-1/16"
(SMALL SIZE - 5 PIECES)

For recommended additions
or changes
contact

Michael Holz

MBHOLZ@ZOOMINTERNET.NET

