

RESEARCH TIPS
&
THE GREY IRON CASTING
COMPANY
MOUNT JOY, PA

Presented by: Michael Holz
2011 SBCCA CONVENTION
DAYTON, OHIO

GENERAL RESEARCH RESOURCES

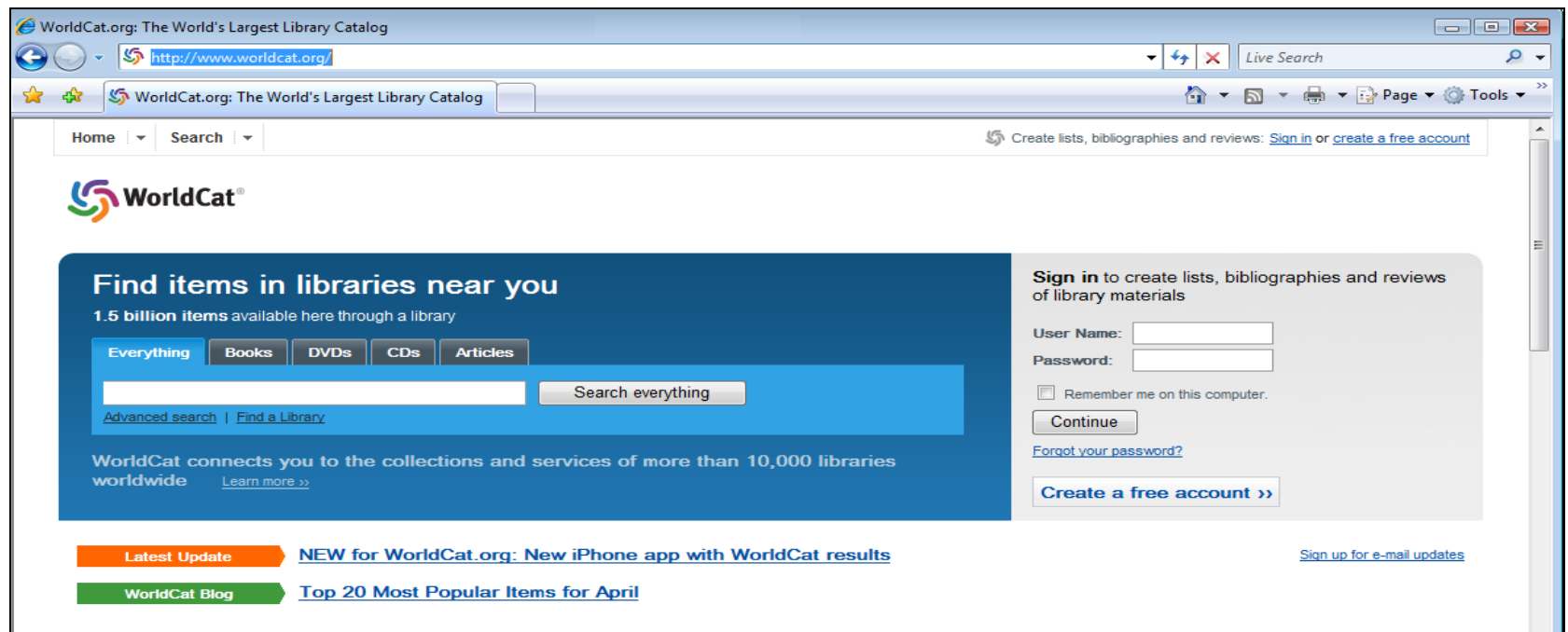
ONLINE:

- Google Books: <http://books.google.com/>
(Iron Age, Household Review, Factory Inspection Reports ...)
- Google Patents: <http://www.google.com/patents>
(Searches United States Patent and Trademark Office data)
- Footnote: <http://www.footnotelibrary.com/>
(Census, Newspapers, City Directories ...)
- Other Genealogical Research sites ...
(Ancestry.com, RootsWeb.com, FamilySearch.org ...)

GENERAL RESEARCH RESOURCES (continued)

ONLINE LIBRARY CATALOG:

WorldCat: <http://www.worldcat.org/>



(connects you to the collections of more than 10,000 libraries)

GENERAL RESEARCH RESOURCES

(continued)

PHYSICAL REFERENCES:

- Trade Catalogs, Price Sheets & Jobbers Catalogs
- Sanborn Fire Maps
- Mechanical Banker & Penny Bank Post Magazines
- Other Genealogical Research material ...
(City Directories, regional profiles, Who's-Who, ...)
- *A HANDBOOK OF OLD PENNY BANKS*,
John D. Meyer, 1952
- *MECHANICAL TOY BANKS*,
Louis H. Hertz, 1947
- *THE PENNY BANK BOOK*,
Andy & Susan Moore, 1984

THE GREY IRON CASTING COMPANY

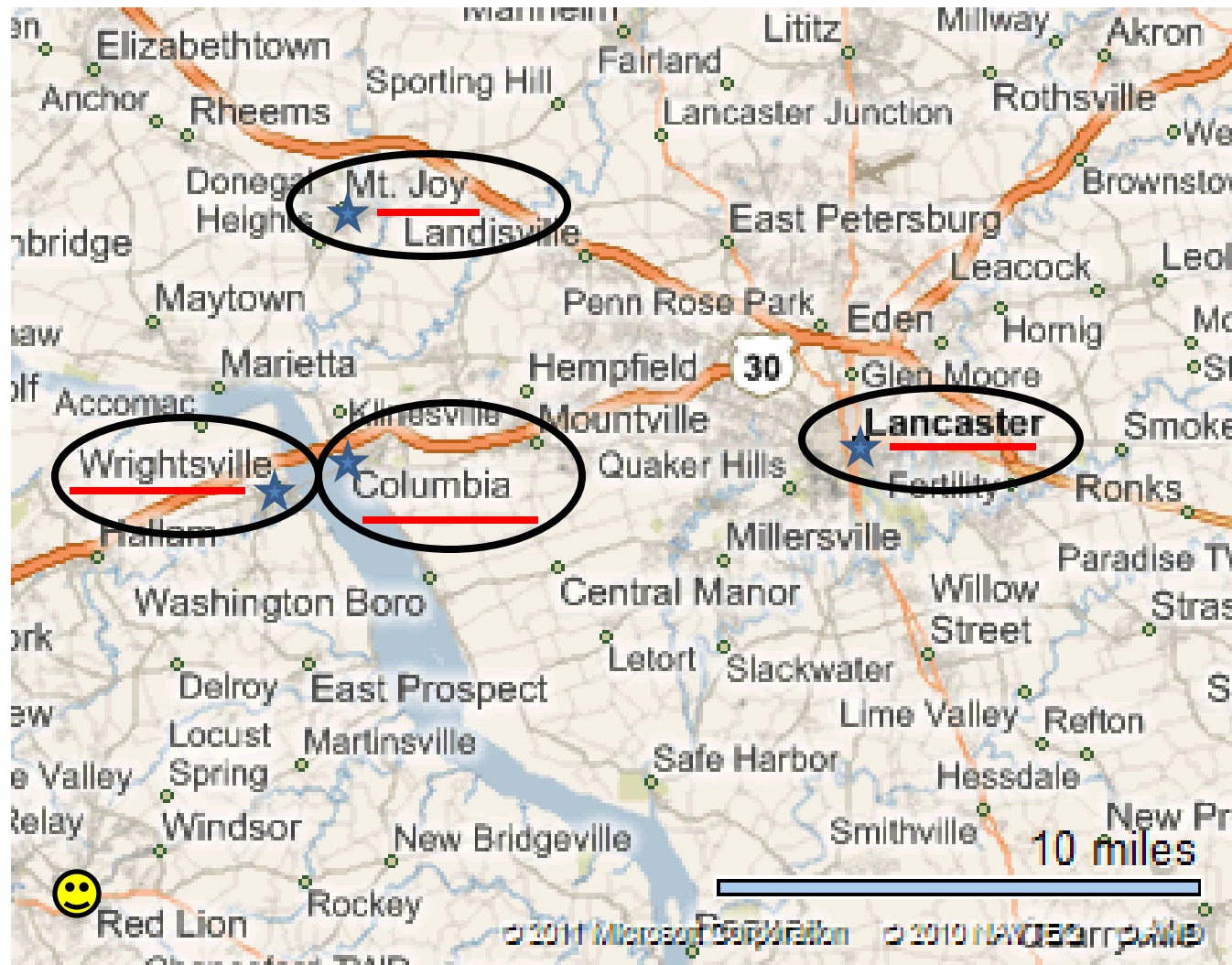


MOUNT JOY, PA

ACKNOWLEDGEMENTS

- The following individuals and institutions provided material used in this presentation:
 - University of Delaware Library, Special Collections
 - Hagley Museum and Library
 - Don Duer
 - Robert Saylor
- This presentation would not have been possible without their support.

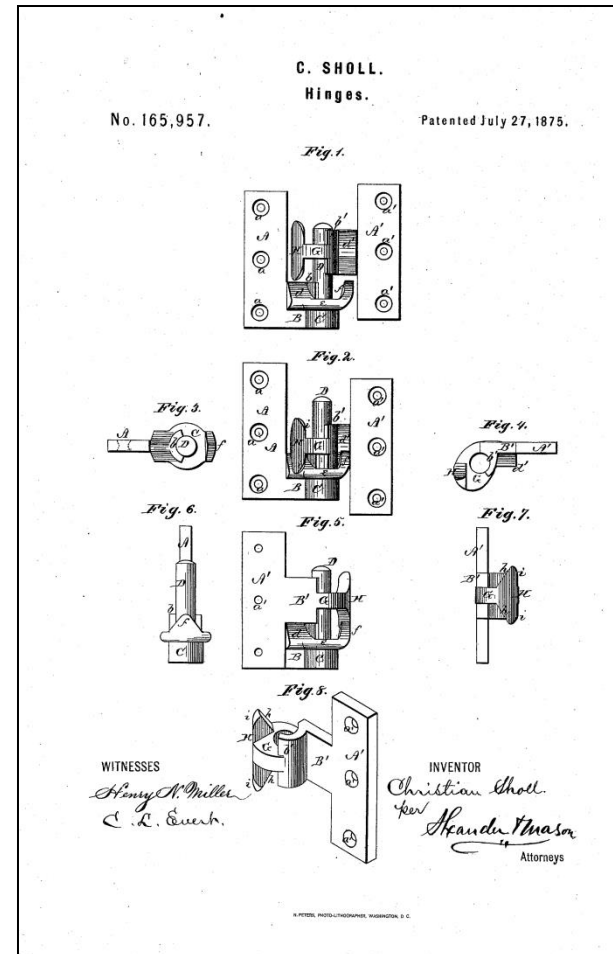
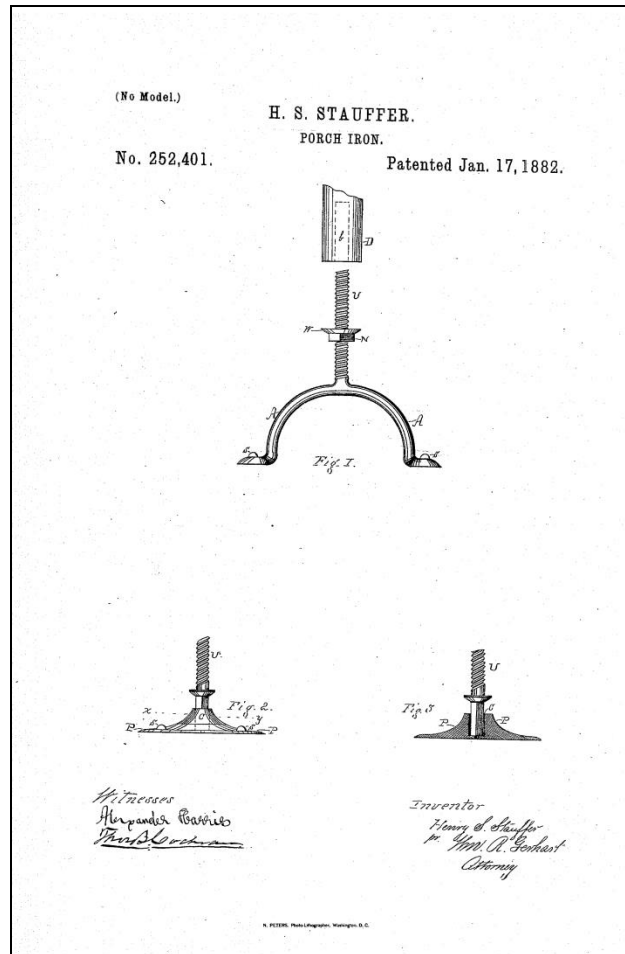
SOUTH-CENTRAL PA HARDWARE AND TOY FOUNDRIES



1881

- The **Grey Iron Company** was organized by **Henry S. Stauffer**, in company with his brother-in-law **S. N. Eaby** for the manufacture of his patented post support and Sholl's reversible blind and shutter drop-hinge.
- They carried out the business together for a short time when Mr. Eaby withdrew. H.S. Stauffer then conducted affairs under the name of the **Grey Iron Casting Company**.

PORCH SUPPORT & SHUTTER HINGE



CIRA 1885

ILLUSTRATED CATALOGUE

OF

GREY IRON CASTING COMPANY,

MANUFACTURERS OF

Sholl's Reversible Blind and Shutter Hinge,

PORCH IRONS, LOCKS, ETC., ETC.,

AND A

FULL LINE OF IRON NOVELTIES.

OFFICE AND WORKS:

EAST MAIN ST., MOUNT JOY, PA.

PRESENTED BY

..... Selling Agent.

LANCASTER, PA.:

PRESS OF INQUIRER PRINTING COMPANY.

GREY IRON CASTING CO., MT. JOY, PA.

3

To the Trade.

We take great pleasure in presenting to our former Customers and the Trade in general, our New and Illustrated Catalogue, and take this opportunity for thanking our customers for the liberal patronage of the past, and hope by strict attention to business, care in producing and finishing our goods, we may merit your future trade.

Estimates on small Grey Iron Castings, Brass Patterns and Galvanizing, given on application, and orders solicited for same.

Hoping for a continuance of the patronage of the Trade, we are

Respectfully yours,

H. S. STAUFFER,

J. W. ESHLEMAN.

ALL GOODS STANDARD SIZES.

GREY IRON CASTING CO., MT. JOY, PA.

21

Bank.



Street Car Bank, Berlin Bronze and Gold, gross, . . .
Half dozen in box.

Match Safe.



No. 80, Berlin Bronze, gross,
One dozen in box.

ALL GOODS STANDARD SIZES.

1891

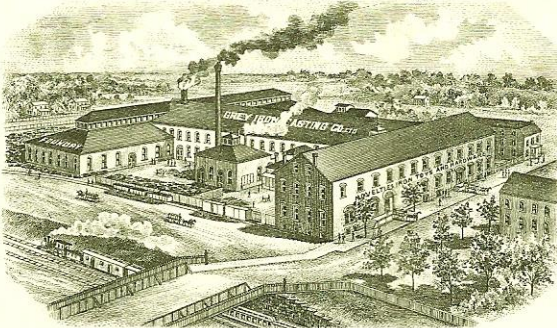
- In February H. S. Stauffer sold the business. He remained in the capacity of the manager of the plant until at least 1894. The organization of the new company was: **T. B. Himes**, President; **John. W. Eshleman**, Secretary and Treasurer; **Reuben J. Myers**, Superintendent.
- At that time they employed 60 men, although the capacity of the mill was 125.

1898 LETTERHEAD

30-

ESTABLISHED 1881

LONG DISTANCE TELEPHONE.



GREY IRON
CASTING COMPANY *Limited.*

T. B. HIMES, PRES.
J. W. ESHLEMAN, SECY & TREAS.
R. J. MYERS, SUPT.

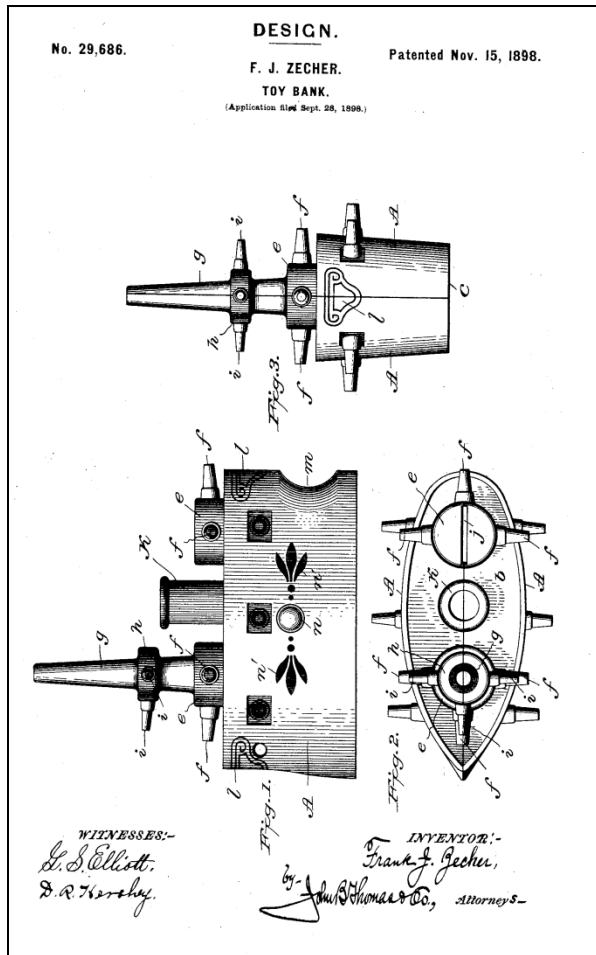
MANUFACTURERS OF SHELF HARDWARE IRON NOVELTIES AND TOYS.

ALL DESCRIPTIONS OF SMALL
GREY IRON, BRASS AND BRONZE CASTINGS.
MADE TO ORDER AT SHORT NOTICE
ALSO BRASS PATTERN WORK AND GALVANIZING,
TINNING AND NICKEL PLATING.

CHAS. HILLEY CO. PHILA.

Mount Joy, Pa. U.S.A. Oct 18 1898

1898 PATENT



At 9:40 on the evening of 15 February 1898, a terrible explosion on board the USS MAINE shattered the stillness in Havana harbor.

Two hundred and sixty-six men lost their lives.

CIRA 1899 CATALOG

Illustrated Catalogue

AND



Price List

OF

Hardware, Iron Novelties, House-Furnishing Specialties

MANUFACTURED BY

GREY IRON CASTING CO.,

(Limited,)

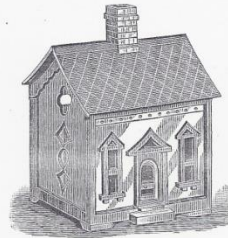
East Donegal Street,

MOUNT JOY, PENN'A.

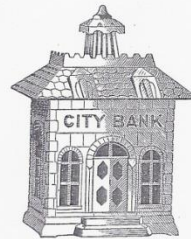
Grey Iron Casting Co., Ltd., Mt. Joy, Pa.

103

Toy Banks.



No. 5, Bank, Coppered, per gross, \$ 7 40
Height, 3¼ inches; width, 2¼ inches; depth, 2¼ inches.
One dozen in box. Five gross in case.



Coppered, per gross, \$ 8 40
Size, 3¼ inches high, 2¼ inches wide, 2 inches deep.
One dozen in box. Five gross in case.
Discount _____ per cent.

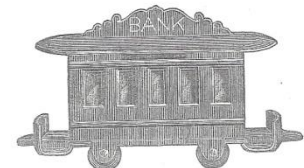
104

Grey Iron Casting Co., Ltd., Mt. Joy, Pa.

Toy Banks.




Painted Assorted Colors, per gross, \$14 40
Size, 4¼ inches high, 3 inches wide, 2¼ inches deep.
Half dozen in box. Two and one-half gross in case.



Street Car Bank, Berlin Bronze and Gold, per gross, \$12 00
Half dozen in box. Two and one-half gross in case.
Discount _____ per cent.


CIRA 1899 CATALOG - CONTINUED

Grey Iron Casting Co., Ltd., Mt. Joy, Pa. 105



No. 10, Berlin Bronze and Painted
assorted colors, per gross, . . . \$14 00
No. 15, Gold Bronzed, per gross, . . 14 50
Size, 4 inches high, 3 inches wide, 2½
inches deep.
Two and one-half gross in case.

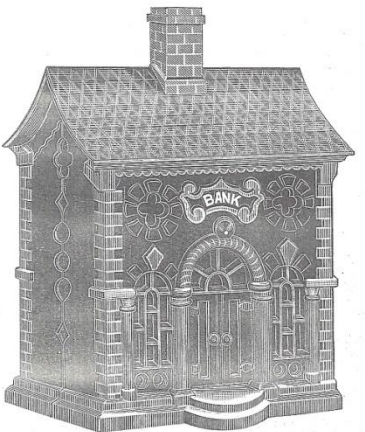
Stove Bank.



Nickeled, per gross, . . . \$16 00
Size, 2¼ inches high, 3½ inches long, 2¼ inches wide.
One-half dozen in box. Two and one-half gross in case.
Discount _____ per cent.

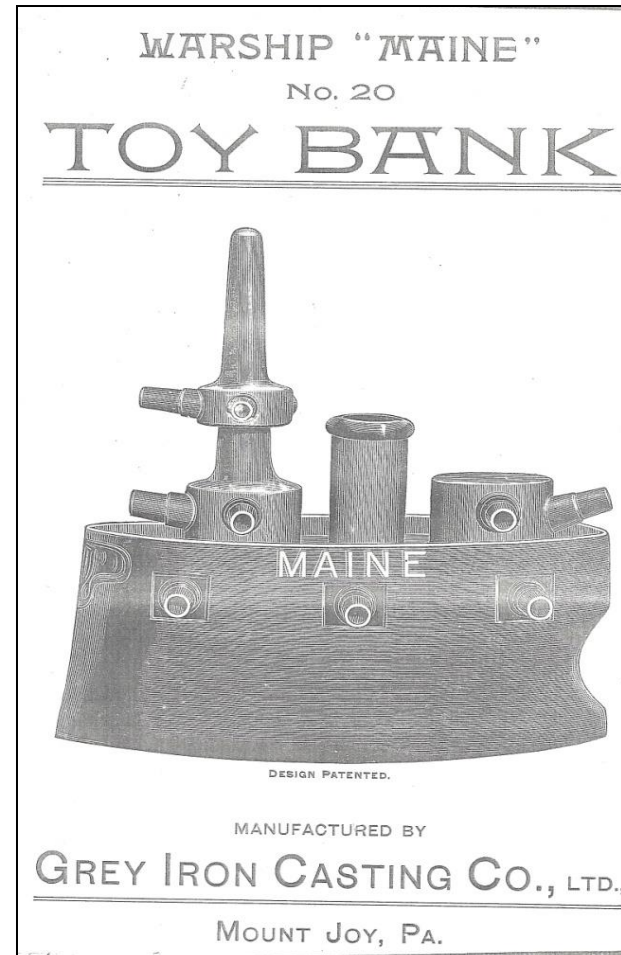
Grey Iron Casting Co., Ltd., Mt. Joy, Pa. 106

No. 119.

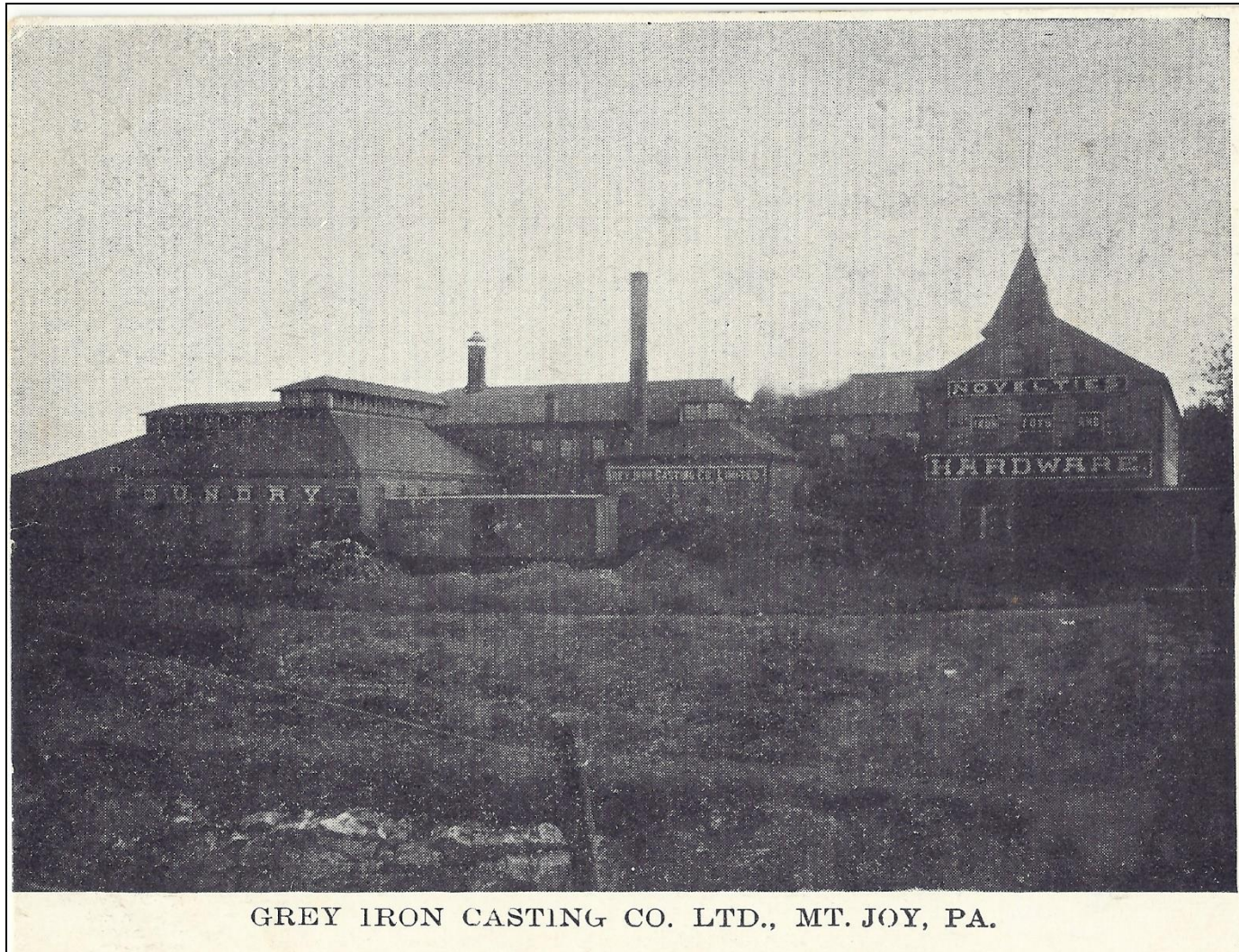


Gold Bronze Painted, per gross, . . . \$27.00
Berlin Bronze, per gross, . . . 25.00
Size, 5¼ inches high, 3¾ inches wide, 3 deep.
One gross in case.
Discount _____ per cent.

CIRA 1899 CATALOG - CONTINUED

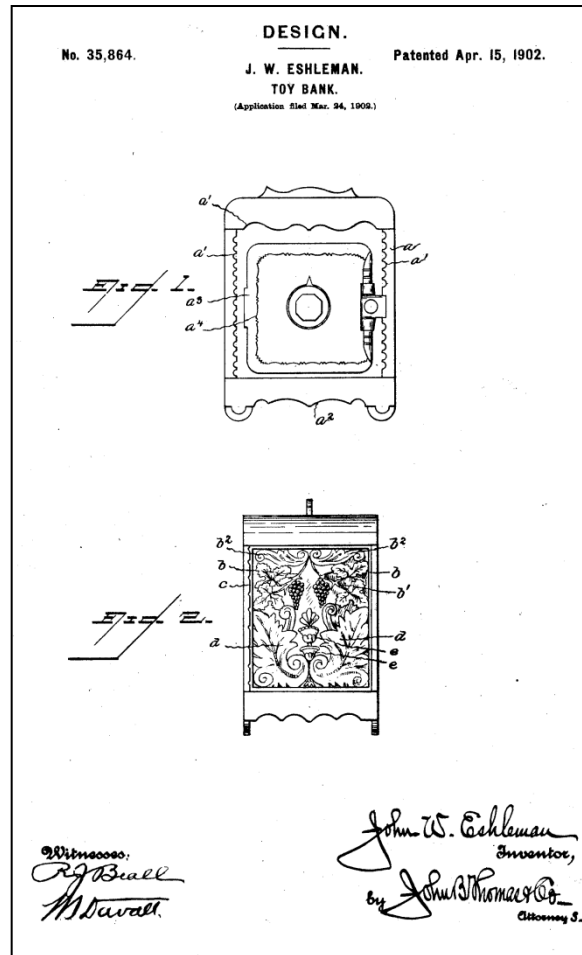


1901-1907 ERA POSTCARD



GREY IRON CASTING CO. LTD., MT. JOY, PA.

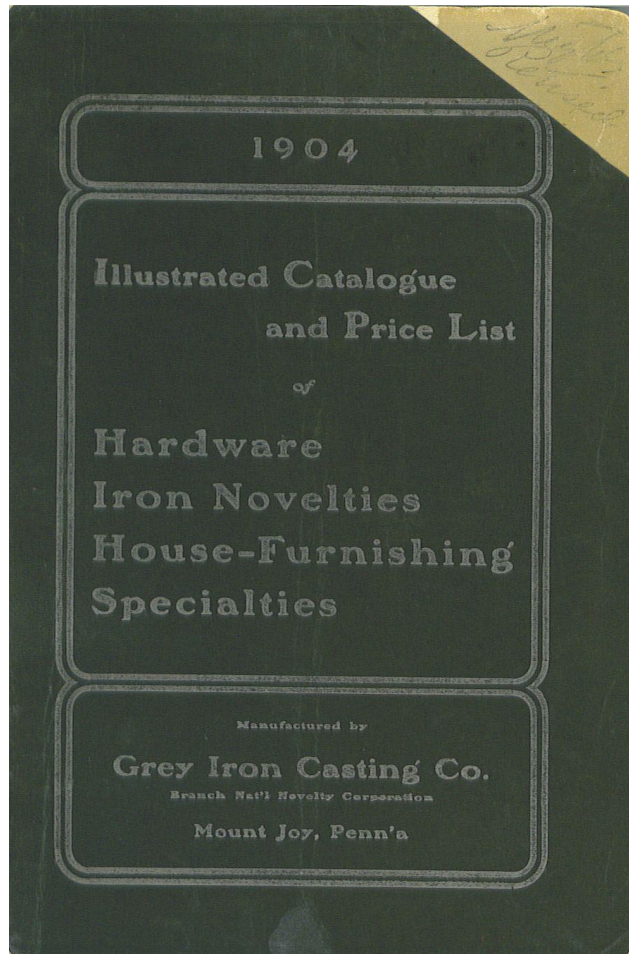
1902 PATENT



1903 – THE ‘TOY TRUST’

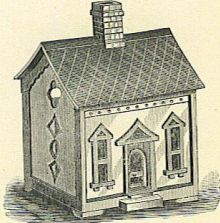
- In July the **National Novelty Corporation** was incorporated in New Jersey with \$10,000,000 planned in Capital Stock.
- They anticipated as many as 30 companies would be included, but peaked at 16.
- Of those companies, several eventually closed their operations and shipped their production patterns and customer files to other factories within the corporation.
- The ***Wing Manufacturing Company*** transferred everything to **Kenton Manufacturing Company** in late 1903/early 1904.
- The ***Logan & Strobridge Iron Company*** (L&S I Co) closed their New Brighton facility in 1906 and transferred their concerns to ***Wrightsville Hardware***.

1904 CATALOG



4 GREY IRON CASTING CO., MOUNT JOY, PA.

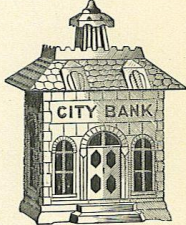
Toy Banks.



No. 5, $\frac{1}{2}$ Bank, Coppered. Height, $3\frac{1}{4}$ inches; width, $2\frac{1}{4}$ inches; depth, $2\frac{1}{4}$ inches, per gross \$ 8.32

One dozen in box. Five gross in case. Approximate weight, 450 pounds.

Discount per cent.



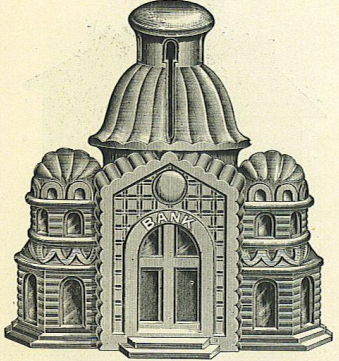
No. 8, Coppered. Height, $3\frac{1}{4}$ inches; width, $2\frac{1}{2}$ inches; depth, 2 inches, per gross \$ 9.45

One dozen in box. Five gross in case. Approximate weight, 470 pounds.

Discount per cent.

GREY IRON CASTING CO., MOUNT JOY, PA. 5

Toy Bank.



Cut full size No. 205.

No. 205, Coppered. Size, $3\frac{1}{4}$ in. high, $3\frac{1}{4}$ in. wide, 2 in. deep, per gross \$ 8.67

No. 206, Bronzed, Painted. Size, $3\frac{1}{4}$ in. high, $3\frac{1}{4}$ in. wide, 2 in. deep, per gross 10.00

One dozen in box. Five gross in case.

No. 210, Coppered. Size, $4\frac{1}{4}$ in. high, $4\frac{1}{4}$ in. wide, $2\frac{3}{4}$ in. deep, per gross ... \$16.66

No. 211, Bronzed, Painted. Size, $4\frac{1}{4}$ in. high, $4\frac{1}{4}$ in. wide, $2\frac{3}{4}$ in. deep, per gross 18.33

One-half dozen in box. Two and one-half gross in case.

No. 225, Bronzed, Painted. Size, $5\frac{1}{4}$ in. high, $5\frac{1}{4}$ in. wide, 3 in. deep. Combination Lock, per gross \$40.00

One in box. One-half gross in case.

Approximate Weight, Case No. 205, 500 pounds.
" " " 210, 450 "
" " " 225, 190 "

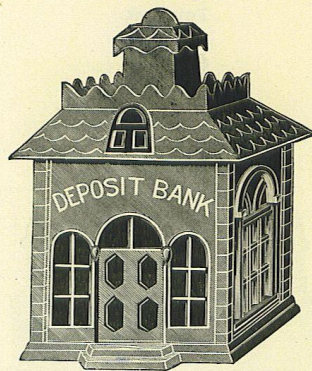
Discount per cent.

1904 CATALOG - CONTINUED

6

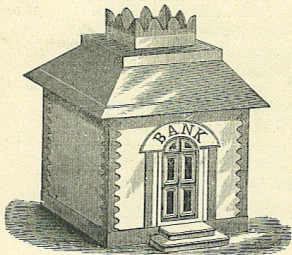
GREY IRON CASTING CO., MOUNT JOY, PA.

Toy Banks.



No. 9, Berlin Bronze, Painted Assorted Colors. Size, 4½ in. high, 3 in. high, 2½ in. deep, per gross \$15.56
One-half dozen in box. Two and one-half gross in case. Approximate weight of case 320 pounds.

Discount _____ per cent.



No. 10, Berlin Bronze and Painted, Assorted Colors, per gross \$15.56

No. 15, Gold Bronze, per gross \$16.66

Size, 4 in. high, 3 in. wide, 2½ in. deep.

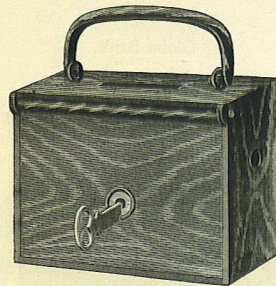
One-half dozen in box. Two and one-half gross in case. Approximate weight of case, 380 pounds.

Discount _____ per cent.

GREY IRON CASTING CO., MOUNT JOY, PA.

7

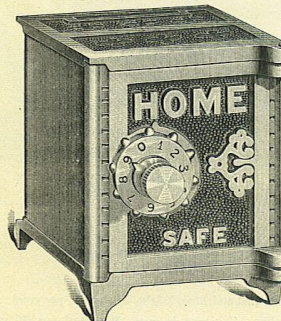
Savings Banks.



No. 300, Nickeled, 4½ ins. long, 2½ ins. wide, 3½ ins. high, per gross \$186.66
No. 305, Oxidized, 4½ ins. long, 2½ ins. wide, 3½ ins. high, per gross 186.66
Packed one dozen in a box,

Discount _____ per cent.

Combination Safe.



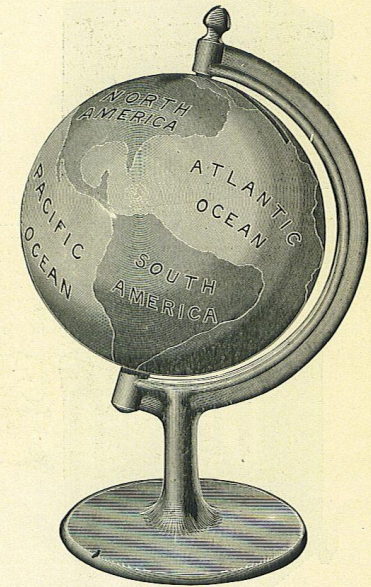
No. 100, Nickeled, 3½ ins. high, 2½ ins. wide, 2½ ins. deep, per gross \$17.75
One-half dozen in a box, two and one-half gross in a case. Approximate weight of case 320 pounds.

Discount _____ per cent.

8

GREY IRON CASTING CO., MOUNT JOY, PA.

Globe Bank.



No. 35, Bank, Enameled Red and Blue, height, 5½ inches, per gross \$18.88
½ dozen in box. Two gross in case. Weight of case 380 pounds.

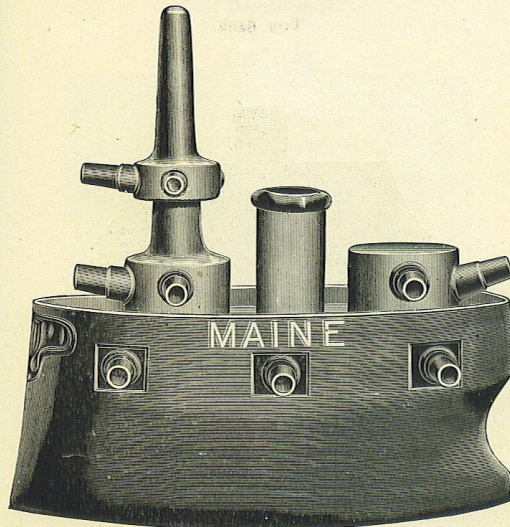
Discount _____ per cent.

1904 CATALOG - CONTINUED

GREY IRON CASTING CO., MOUNT JOY, PA.

9

Warship Maine Toy Bank.



Full size cut No. 20.

No. 20, Berlin Bronze, size, $4\frac{1}{2}$ in. long, $2\frac{3}{4}$ in. wide, $4\frac{3}{4}$ in. high., per gross.. 1558

No. 21, Enameled and Gold, size same as No. 20, per gross..... \$18.88

No. 25, Enameled and Gold, size, $6\frac{3}{4}$ in. long, $2\frac{3}{4}$ in. wide, $5\frac{1}{4}$ in. high, key lock, per gross..... 2852

Nos. 20 and 21, one-half dozen in box. One and three-quarter gross in case.

No. 25, one-sixth dozen in box. One-half gross in case.

Approximate weight of case, Nos. 20 and 21, 300 pounds.

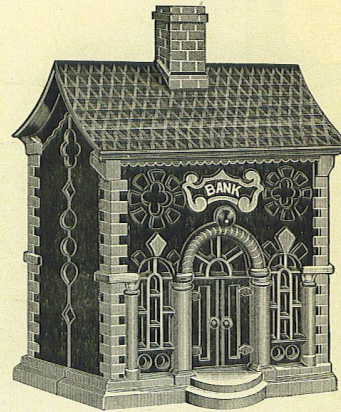
Approximate weight of case, No. 25, 150 pounds.

Discount..... per cent.

10

GREY IRON CASTING CO., MOUNT JOY, PA.

Toy Bank.



No. 119, Gold Bronze Painted, per gross..... \$40.00

No. 900, Berlin Bronze, per gross..... 19.98

Size, $5\frac{1}{4}$ inches high, $3\frac{3}{4}$ inches wide 3 inches deep.

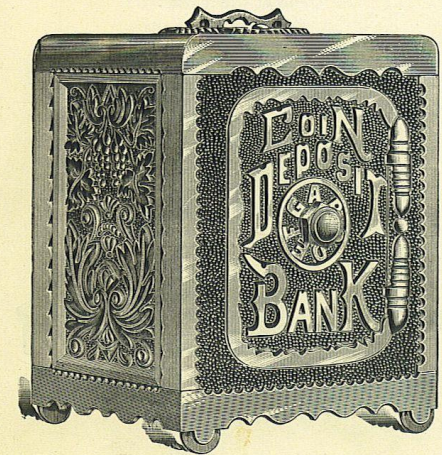
One-half dozen in box. One gross in case. Approximate weight of case 350 pounds.

Discount..... per cent.

GREY IRON CASTING CO., MOUNT JOY, PA.

11

Coin Deposit Bank.



No. 250, Size $4\frac{1}{2}$ ins. high, 3 ins. wide, $2\frac{1}{2}$ ins. deep. Packed three in a box, half gross in a case. Weight of case 130 pounds. Per gross..... \$ 40.00 2112

No. 500, Size $5\frac{1}{4}$ ins. high, $4\frac{1}{4}$ ins. wide, $3\frac{1}{2}$ ins. deep. Packed one in a box, one-fourth gross in a case. Weight of case 275 pounds. Per gross..... 86.66 480

No. 1000, Size $6\frac{3}{4}$ ins. high, $5\frac{1}{4}$ ins. wide, $4\frac{1}{2}$ ins. deep. Packed one in a box, one-sixth gross in a case. Weight of case 170 pounds. Per gross..... 186.66 858

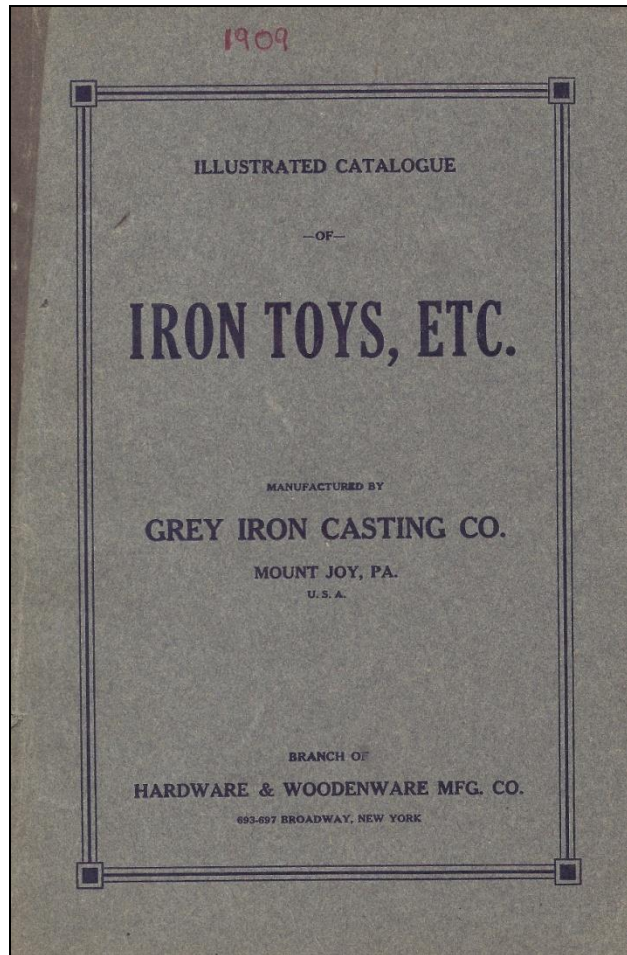
Entirely new design; highly polished and nickeled; a beautiful safe with good combination.

Discount..... per cent.

1906-1907-1908

- **December 1906**: the **National Novelty Corporation** went into receivership.
- **Early 1907**: the **Hardware & Woodenware Manufacturing Company** was organized for the purpose of taking over the assets of the National Novelty Company, in which they were interested as stockholders and creditors.
- **February 1908**: the ***Kenton Manufacturing Company*** went into receivership, closed their doors, and transferred many of their patterns and dies to other companies within in the Hardware & Woodenware Manufacturing Company. Their largest Stamping Mill was transferred to the Grey Iron Casting Company.
- **February 1908**: the Hardware & Woodenware Manufacturing Company was placed in the hands of a receiver (**Nicholas H. Colwell**) and who successfully restructured their debt, allowing them to remain in operation.

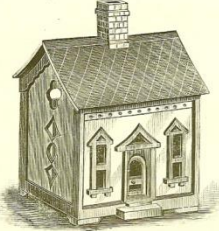
CIRA 1910 CATALOG



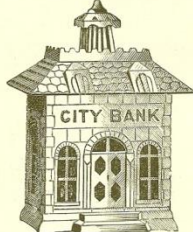
6

GREY IRON CASTING CO.

TOY BANKS

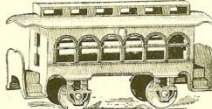


No. 5. Bank. Coppered. Height, $3\frac{1}{4}$ inches; width $2\frac{1}{4}$ inches; depth, $2\frac{1}{4}$ inches, per gross.
One dozen in box. Five gross in case. Approximate weight, 450 pounds.



No. 8 Coppered. Height, $3\frac{1}{4}$ inches; width, $2\frac{1}{2}$ inches; depth, 2 inches, per gross.
One dozen in box. Five gross in case. Approximate weight, 470 pounds.

CAR BANK

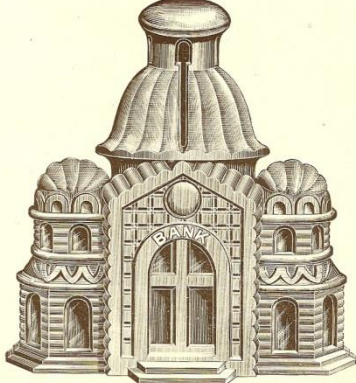


No. 604. Aluminum Finish. Length, $5\frac{1}{2}$ inches. Twelve in a box.
Two gross in a case. Weight of case, 275 pounds.

GREY IRON CASTING CO.

7

TOY BANK



Cut full size No. 205.

No. 205. Coppered. Size, $3\frac{1}{4}$ in. high, $3\frac{1}{2}$ in. wide, 2 in. deep.
No. 206. Bronze, Painted. Size, $3\frac{1}{2}$ in. high, $3\frac{1}{2}$ in. wide, 2 in. deep.
One dozen in box. Five gross in case, per gross.

No. 210. Coppered. Size, $4\frac{1}{4}$ in. high, $4\frac{1}{4}$ in. wide, $2\frac{3}{8}$ in. deep.
No. 211. Bronze, Painted. Size $4\frac{1}{4}$ in. high, $4\frac{1}{4}$ in. wide, $2\frac{3}{8}$ in. deep.
One-half dozen in box. Two and one-half gross in case, per gross.

No. 225. Bronze, Painted. Size, $5\frac{1}{8}$ in. high, $5\frac{1}{4}$ in. wide, 3 in. deep.
Combination Lock.

No. 230. Same as No. 225 but copper oxidized.
One in box. One-half gross in case, per gross.

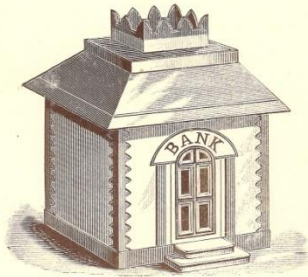
Approximate weight, Case No. 205, 500 pounds.
" " " No. 210, 450 "
" " " No. 225, 190 "

CIRA 1910 CATALOG- CONTINUED

8

GREY IRON CASTING CO.

TOY BANKS



No. 10. Berlin Bronze and Painted, Assorted Colors. per gross.

No. 15. Gold Bronze, per gross.

Size, 4 in. high, 3 in. wide, 2½ in. deep.

One-half dozen in box. Two and one-half gross in case. Approximate weight of case, 380 pounds.

COMBINATION SAFE



No. 100. Nickeled, 3½ ins. high, 2½ ins. wide, 2½ ins. deep, per gross. One-half dozen in a box, two and one-half gross in a case. Approximate weight of case, 320 pounds.

GREY IRON CASTING CO.

SAVINGS BANK



No. 300. Nickeled, 4½ ins. long, 2¼ ins. wide, 3½ ins. high, per gross.

No. 305. Oxidized, 4½ ins. long, 2¼ ins. wide, 3½ ins. high, per gross.

One in a box. One dozen in a case. Approximate weight, 25 pounds.

SAFE

THE RIVAL SAFE

No. 25. Nicely polished and nickel-plated. Good lock and key. Made of steel and iron.

Height, 3½ inches. Width, 2½ inches.

Depth, 2½ inches.

Twelve in a box.

Two gross in a case.

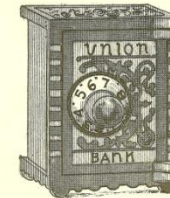
Weight of case, 211 lbs.



10

GREY IRON CASTING CO.

COMBINATION SAFE



THE UNION COMBINATION SAFE

No. 160. Made of steel and iron. Our 20th Century leader is a hummer for a 15 cent Combination Lock Bank. Nicely nickel-plated.

Size: height, 3½ inches. Width, 2½ inches. Depth, 2½ inches.

Twelve in a box. Two gross in a case.

Weight of case, 235 lbs.

COMBINATION BANKS

No. 612. Steel Sides. Nickel-plated.

No. 614. Steel Sides. Electro Oxidized.

Height, 4¼ inches. Width, 3¾ inches.

Six in a box. One gross in a case.

Weight of case, 225 lbs.

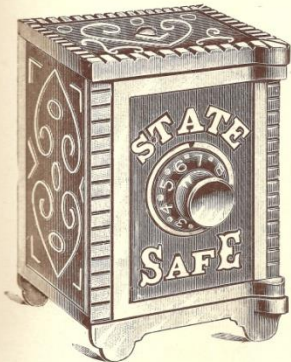


CIRA 1910 CATALOG- CONTINUED

GREY IRON CASTING CO.

11

COMBINATION SAFES



THE STATE SAFE

No. 65. Nickelplated.

This is an all iron bank. Has the same artistic feature as the National Bank, being a size smaller; it is closed with a combination lock. Highly polished and plated.

Height, 4½ inches.
Width, 3 inches.
Depth, 3 inches.

Six in a box. Twelve dozen in a case. Weight of case, 229 lbs.

THE ARMY SAFE

No. 45. Nickelplated.

Large safe, steel embossed sides and back. Nicely polished and nicked. Combination lock; a rapid seller.

Height, 4¼ inches.
Width, 3 inches.
Depth, 3 inches.

Six in a box. Twelve dozen in a case. Weight of case, 169 lbs.



GREY IRON CASTING CO.

12

COMBINATION SAFE



NATIONAL SAFE

No. 50. Nickelplated.

Made of Heavy Steel and Iron. Beautifully Embossed. Handsomely Polished and Plated. Has good Combination Lock.

Height, 5 inches. Width, 3¾ inches. Depth, 3¾ inches.

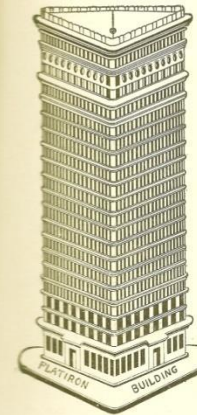
Six in a box. Six dozen in a case.

Weight of case, 133 lbs.

GREY IRON CASTING CO.

13

FLAT IRON BUILDING BANK

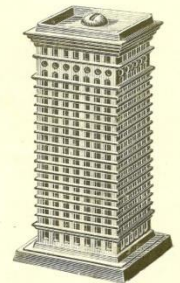


No. 615. Aluminum Finish. Height, 5½ inches. Six in a box. Six dozen in a case. Weight of case, 80 lbs.

No. 616. Aluminum Finish. Height, 6 inches. Three in a box. Six dozen in a case. Weight of case, 140 lbs.

No. 618. Aluminum Finish. Height, 8½ inches. Two in a box. Three dozen in a case. Weight of case, 140 lbs.

SKY SCRAPER BANK



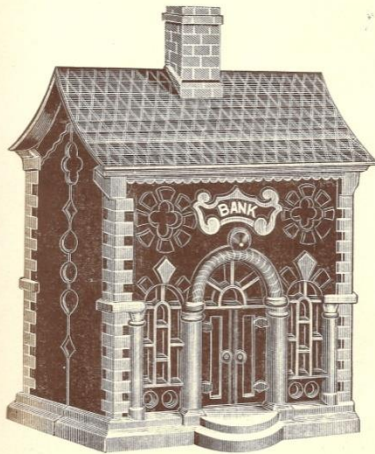
No. 620. Aluminum Finish. Height, 5½ inches. Six in a box. Six dozen in a case. Weight of case, 80 lbs.

CIRA 1910 CATALOG- CONTINUED

GREY IRON CASTING CO.

15

TOY BANK



- No. 119. Gold bronze painted, per gross.
No. 900. Berlin bronze, per gross.

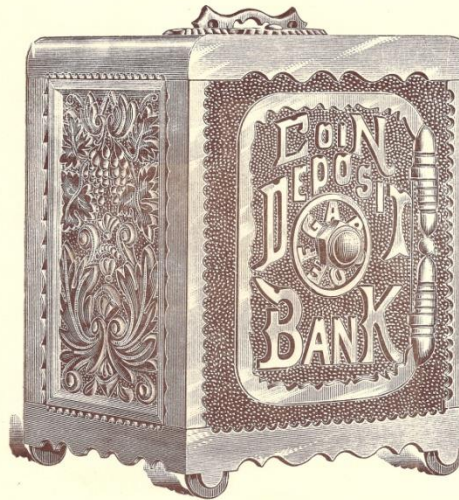
Size, $5\frac{1}{4}$ inches high, $3\frac{3}{4}$ inches wide, 3 inches deep.

One-half dozen in a box. One gross in case. Approximate weight of case, 350 pounds.

16

GREY IRON CASTING CO.

COIN DEPOSIT BANK

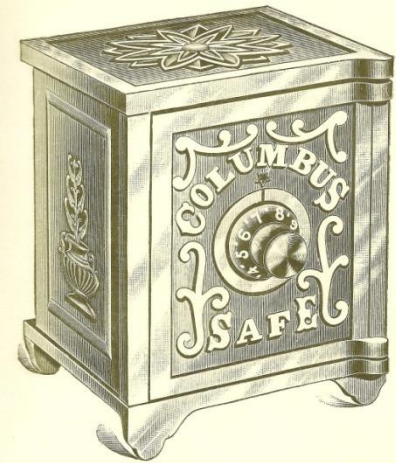


- No. 250. Size $4\frac{1}{2}$ ins. high, 3 ins. wide, $2\frac{1}{2}$ ins. deep. Packed three in a box, half gross in a case. Weight of case 130 pounds, per gross.
No. 255. Same as No. 250 but copper oxidized, per gross.
No. 260. Same as No. 250 with sheet iron back and sides.
No. 265. Same as No. 260 but copper oxidized, per gross.
No. 500. Size, $5\frac{1}{4}$ ins. high, $4\frac{1}{4}$ ins. wide, $3\frac{1}{2}$ ins. deep. Packed one in a box, one-fourth gross in a case. Weight of case 275 pounds, per gross.
No. 505. Same as No. 500 but copper oxidized, per gross.
No. 510. Same as No. 500 but sheet iron back and sides, per gross.
No. 515. Same as No. 510 but copper oxidized, per gross.
No. 1000. Size, $6\frac{3}{4}$ ins. high, $5\frac{1}{4}$ ins. wide, $4\frac{1}{2}$ ins. deep. Packed one in a box, one-sixth gross in a case. Weight of case, 170 pounds, per gross.
No. 1005. Same as No. 1000 but copper oxidized, per gross.

GREY IRON CASTING CO.

17

COMBINATION SAFES

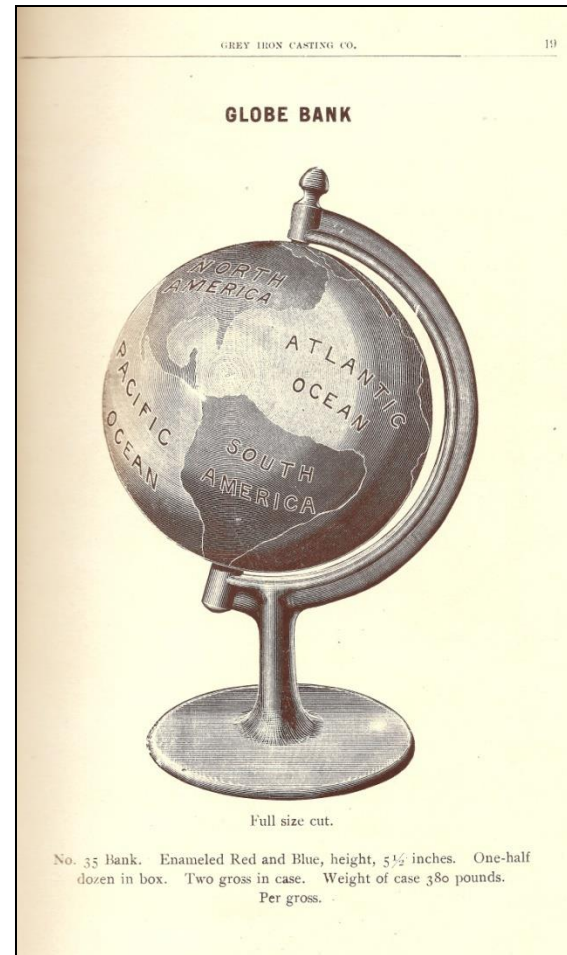
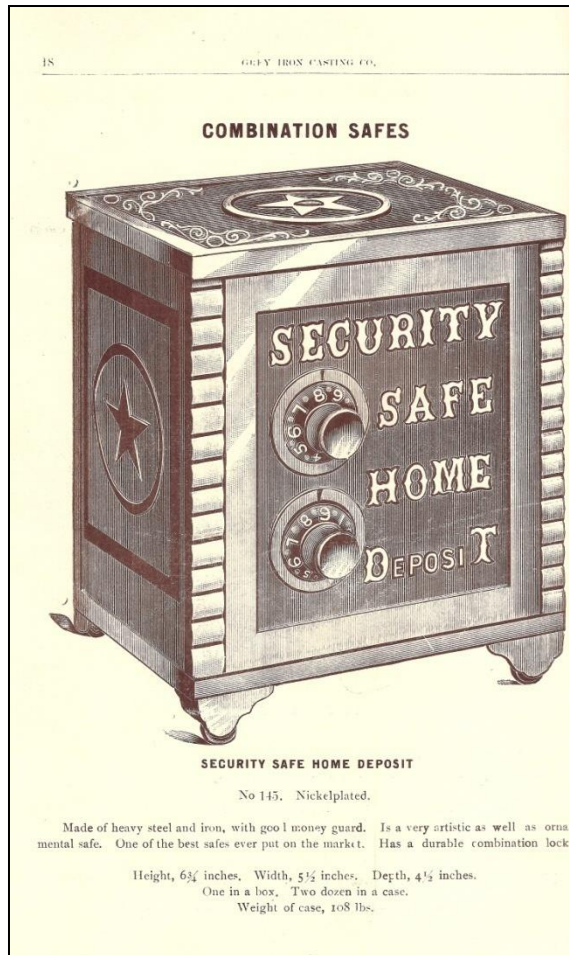


COLUMBUS SAFE

- No. 105. Highly polished and nickelplated. Made of steel and iron. Embossed sides and back. Has good combination lock.

Height, $5\frac{1}{2}$ inches. Width, $4\frac{1}{4}$ inches. Depth, 4 inches. One in a box. Three dozen in a case. Weight of case, 63 lbs.

CIRA 1910 CATALOG- CONTINUED



NOTE: KENTON reopened in February 1910 and their patterns were returned.

1912 – THE ‘TOY TRUST’ ENDS

- In early 1912 the **Hardware & Woodenware Manufacturing Company** failed and the **Assets Realization Company** was appointed as the receiver. They were authorized to sell the company assets at public auction in April 1912.
- Prior to the public sale on April 20th, agents of the Asset Realization Company entered into a private agreement to sell the ***Grey Iron Casting Company*** plant in Mount Joy to the ***Wrightsville Hardware Company*** for \$35,000.
- After the public sale the Asset Realization Company defaulted on their agreement with Wrightsville Hardware and sold nine properties – including the ***Grey Iron Casting Company*** plant to **George E. Shaw** and **Campbell Carrington**.

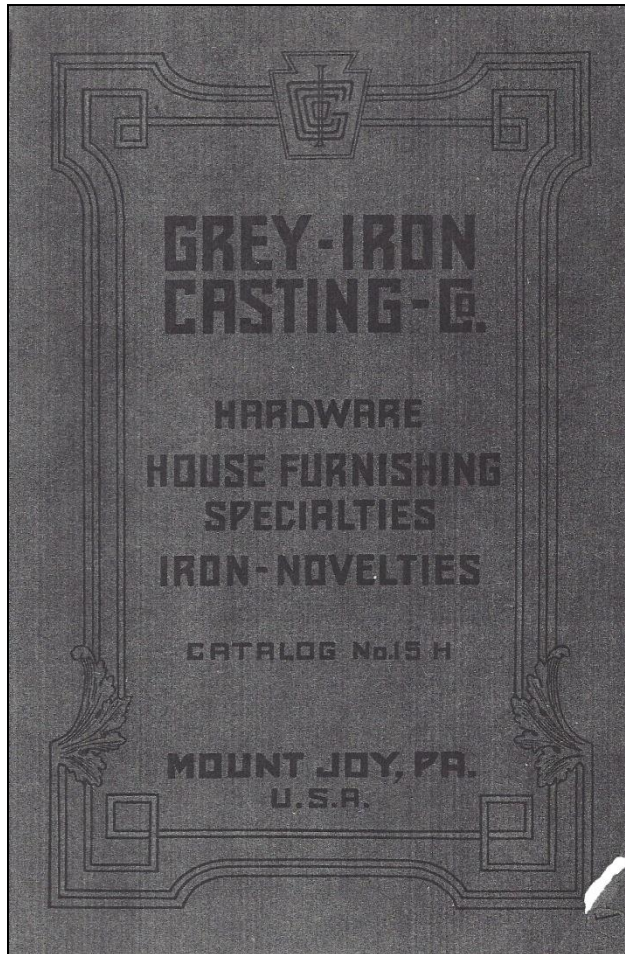
1913 – 1914

- **March 1913**: **William A Coventry** (President) and **I.R. Stewart** (Treasurer & Secretary) of the Wrightsville Hardware Company went on to sue the Assets Realization Company over ownership of the Grey Iron Casting Company plant.
- **August 1913**: letters of incorporation were filed for the Grey Iron Casting Company listing **John W. Eshleman** of Mt Joy PA, **John S. Jenks** of Philadelphia and **John E. Snyder** as officers.
- **January 1914**: the Assets Realization Company was directed to turn over all physical property and patents of the Grey Iron Casting Company to Wrightsville Hardware .

1914 – 1921

- **John W Eshleman** alleged that on June 26, 1914 he entered into an oral agreement with **W. A. Coventry**, **G. Ellsworth Higgins** and **I. R. Stewart** to buy, sixty-two and a half shares of the capital stock of the ***Grey Iron Casting Company*** which represented one quarter of the total stock.
- Stock appears never to have exchanged hands. Coventry was in Lancaster, but Higgins and Stewart were in New York.
- As of 1921 this issue was still tied up in the courts due to questions surrounding jurisdiction.

1915 HARDWARE CATALOG



72

Grey Iron Casting Co., Mount Joy, Pa.

COIN DEPOSIT BANKS.



Entirely new design. Handsomely finished.
A beautiful safe with first class combination.

- | | | |
|-----------|------------------------|---|
| No. 250. | Nickel Plated. | } 4½ ins. high. 3 ins. wide. 2½ ins. deep. |
| No. 255. | Copper Oxidized. | |
| | | 4 in a box. ½ gross in a case. 125 lbs. per case. |
| No. 260. | Nickel Plated | Same as No. 250, but with steel back and sides. |
| No. 265. | Copper Oxidized. . . . | Same as No. 255, but with steel back and sides. |
| | | 100 lbs. per case. |
| No. 500. | Nickel Plated. | } 5¼ ins. high. 4¼ ins. wide. 3½ ins. deep. |
| No. 505. | Copper Oxidized. | |
| | | 1 in a box. ¼ gross in a case. 140 lbs. per case. |
| No. 510. | Nickel Plated | Same as No. 500, but with steel back and sides. |
| No. 515. | Copper Oxidized. . . . | Same as No. 505, but with steel back and sides. |
| | | 100 lbs. per case. |
| No. 1000. | Nickel Plated. | } 6¾ ins. high. 5¼ ins. wide. 4½ ins. deep. |
| No. 1005. | Copper Oxidized. | |
| | | 1 in a box. ⅓ gross in a case. 165 lbs. per case. |

GLOBE BANKS.

Made entirely of cast iron, with the continents
cast in relief and suitably decorated
in colors.

No. 35. Enamelled.

Height, 5½ inches.

½ dozen in a box. 1 gross in a case.

190 lbs. per case.



Get Our TOY CATALOG for Complete Line of GUARANTEED IRON TOYS.

1915 HARDWARE CATALOG - CONT.

Grey Iron Casting Co., Mount Joy, Pa.

73

SAVINGS BANKS.

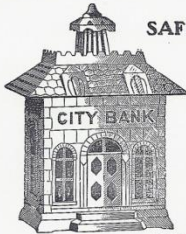


Beautifully polished and finished. A handsome and substantial bank.
Carefully fitted with excellent lock.

No. 300. Nickel Plated.	} Length, 4½ ins. Width, 2¼ ins. Height, 3½ ins.
No. 305. Copper Oxidized.	

1 in a box. 2 dozen in a case. 50 lbs. per case.

SAFE DEPOSIT BANKS.

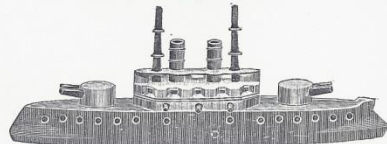


No. 8. Coppered.

Height, 3½ inches.
Width, 2¼ inches.
Depth, 2 inches.

1 dozen in a box. 2 gross in a case.
210 lbs. per case.

BATTLESHIP BANKS.



Aluminum hull, decorated masts and turrets.

No. 30. Savings Bank Battleship.

11¼ inches long. 1 in a box. ½ gross in a case. 150 lbs. per case.

Get Our TOY CATALOG for Complete Line of GUARANTEED IRON TOYS.

On pages 71 to 76 of this catalog we have shown
a few numbers only of our

GUARANTEED LINE OF IRON TOYS.

If at all interested in this line of goods, ask for our
TOY CATALOG, containing

BANKS (over 70 designs)
BATTLESHIPS
BOMBS
CHRISTMAS TREE HOLDERS
GAS STOVES
HAMMERS
HATCHETS
ICE WAGONS
JACK STONES
KITCHEN UTENSILS
PENNY TOYS
RANGES
SAD IRONS
SEA SIDE PICKS
SHOVELS
STOVES
TOY TOOLS
TOPS
TRAINS
ETC.

We are bringing out a large line of entirely new
designs for the coming season.

1915 TOY CATALOG

GUARANTEED



IRON-TOYS

CATALOG · No. 15 · T.

**GREY-IRON
CASTING-CO.**

MOUNT · JOY · PA · U · S · A.

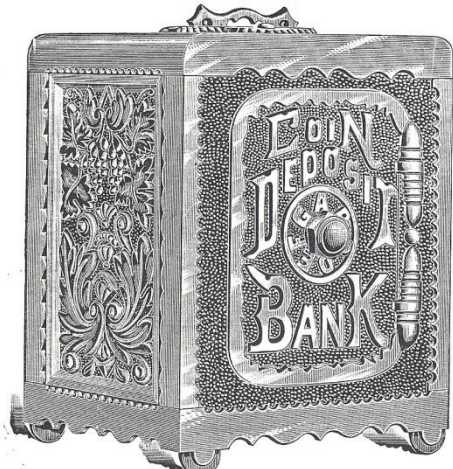
**NEW-YORK
REPRESENTATIVES
RIEMANN · SEABREY · CO.
11 - 15 · UNION · SQ · WEST.**

18 GREY-IRON-CASTING-CO. MOUNT JOY-PENNA. U.S.A.

THE GUARANTEED LINE

COIN DEPOSIT BANKS.

Combination Lock.



Entirely new design. Handsomely finished.
A beautiful safe with first class combination.

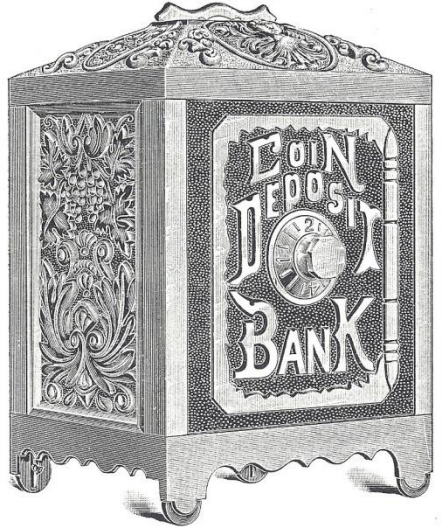
No. 250.	Nickel Plated.	} 4¼ ins. high. 3 ins. wide. 2½ ins. deep.
No. 255.	Copper Oxidized.	
		} 4 in a box. ½ gross in a case. 125 lbs. per case.
No. 260.	Nickel Plated.	Same as No. 250, but with steel back and sides.
No. 265.	Copper Oxidized.	Same as No. 255, but with steel back and sides.
		100 lbs. per case.
No. 500.	Nickel Plated.	} 5¼ ins. high. 4¼ ins. wide. 3½ ins. deep.
No. 505.	Copper Oxidized.	
		} 1 in a box. ¼ gross in a case. 140 lbs. per case.
No. 510.	Nickel Plated.	Same as No. 500, but with steel back and sides.
No. 515.	Copper Oxidized.	Same as No. 505, but with steel back and sides.
		100 lbs. per case.
No. 1000.	Nickel Plated.	} 6¾ ins. high. 5¼ ins. wide. 4½ ins. deep.
No. 1005.	Copper Oxidized.	
		} 1 in a box. ¼ gross in a case. 165 lbs. per case.

GREY-IRON-CASTING-CO. MOUNT JOY-PENNA. U.S.A. 19

THE GUARANTEED LINE

COIN DEPOSIT BANKS.

Combination Lock.



Handsome new design. Highly polished and finished.
A high grade safe with accurate combination.

No. 275.	Nickel Plated.	} 4¾ ins. high. 3 ins. wide. 2½ ins. deep.
No. 280.	Copper Oxidized.	
		} 4 in a box. ½ gross in a case. 125 lbs. per case.
No. 285.	Nickel Plated.	Same as No. 275, but with steel sides and back.
No. 290.	Copper Oxidized.	Same as No. 280, but with steel sides and back.
		100 lbs. per case.
No. 525.	Nickel Plated.	} 5½ ins. high. 4¼ ins. wide. 3½ ins. deep.
No. 530.	Copper Oxidized.	
		} 1 in a box. ¼ gross in a case. 140 lbs. per case.
No. 535.	Nickel Plated.	Same as No. 525, but with steel sides and back.
No. 540.	Copper Oxidized.	Same as No. 530, but with steel sides and back.
		100 lbs. per case.
No. 2000.	Nickel Plated.	} 7 ins. high. 5¼ ins. wide. 4½ ins. deep.
No. 2005.	Copper Oxidized.	
		} 1 in a box. ¼ gross in a case. 165 lbs. per case.

1915 TOY CATALOG - CONTINUED

INSERT OPPOSITE PAGE 20 IN CATALOG 1ST

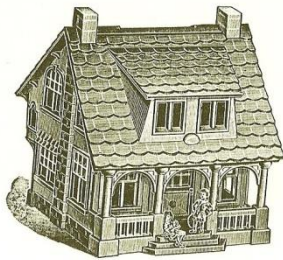
GREY IRON CASTING CO.



MOUNT JOY, PENNA. U.S.A. 20A

THE GUARANTEED LINE

BUNGALOW BANK.



PATENT PENDING.
No. 20

A Perfect Model of a Beautifully
Designed Bungalow.

Absolutely New.

Must be seen to be appreciated.

No. 20. Nickel Plated.

No. 20A. Electro Oxidized.

Height, $3\frac{3}{4}$ inches.

Width, $3\frac{1}{2}$ inches.

Depth, $3\frac{1}{2}$ inches.

1 in a carton.

6 dozen in a case.

120 lbs. per case.

UNITED STATES TREASURY BANK.

Entirely New Design.
Handsomely Modeled and Complete
in Every Detail.
Nothing like it on the market.

No. 45. Nickel Plated.

No. 45A. Electro Oxidized.

Height, $3\frac{3}{4}$ inches.

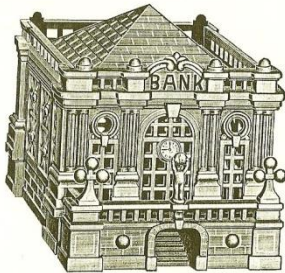
Width, $3\frac{1}{4}$ inches.

Depth, 4 inches.

1 in a carton.

6 dozen in a case.

115 lbs. per case.



PATENT PENDING.
No. 45

INSERT OPPOSITE PAGE 20 IN CATALOG 1ST

GREY IRON CASTING CO.



MOUNT JOY, PENNA. U.S.A. 20B

THE GUARANTEED LINE

FIREPLACE BANK.



PATENT PENDING.
No. 75.

New and Original Design.
Very Attractive.
Beautifully Modeled.

No. 75. Gold Lacquered.

No. 75N. Nickel Plated.

No. 75A. Electro Oxidized.

Height $3\frac{1}{2}$ inches

Width, $4\frac{1}{4}$ inches.

Depth, $1\frac{3}{4}$ inches.

$\frac{1}{2}$ dozen in a carton.

1 gross in a case.

160 lbs. per case.

MERRY-GO-ROUND BANK.

Distinctly New and Novel.
Handsomely Designed and Finished.
Bank Revolves on Base.

No. 40. Nickel Plated.

No. 40A. Polished and Oxidized.

No. 40B. Polished and Nickel
Plated.

Height, 5 inches.

Diameter, $4\frac{1}{2}$ inches.

1 in a carton.

6 dozen in a case.

140 lbs. per case.



PATENT PENDING.
No. 40.

INSERT OPPOSITE PAGE 20 IN CATALOG 1ST

GREY IRON CASTING CO.



MOUNT JOY, PENNA. U.S.A. 20C

THE GUARANTEED LINE

COMBINATION BANKS.

Entirely New Designs.
Something Absolutely Different from the
Old Style Banks.

Very Handsomely Designed
and Finished.

No. 65. Polished and Nickel Plated.

No. 65A. Polished and Oxidized.

Height, $5\frac{1}{4}$ inches.

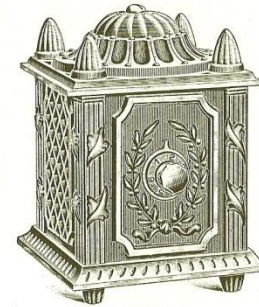
Width, 4 inches.

Depth, 4 inches.

1 in a carton.

3 dozen in a case

100 lbs. per case



PATENT PENDING
No. 65.

A Particularly Handsome Bank of New
and Novel Design.

Beautifully Modeled and Finished.

Attractive to Old and Young.

Perfectly Proportioned.

Best Combination Lock.

No. 90. Polished and Nickel Plated.

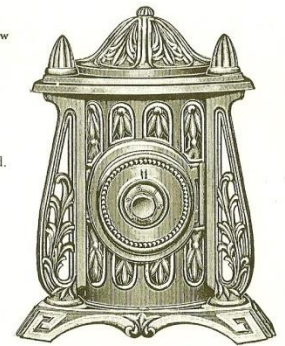
No. 90A. Polished and Oxidized.

Height, $6\frac{1}{4}$ inches.

1 in a carton.

3 dozen in a case.

120 lbs. per case.



PATENT PENDING
No. 90.

1915 TOY CATALOG - CONTINUED

20 GREY IRON CASTING CO. MOUNT JOY, PENNA. U.S.A.

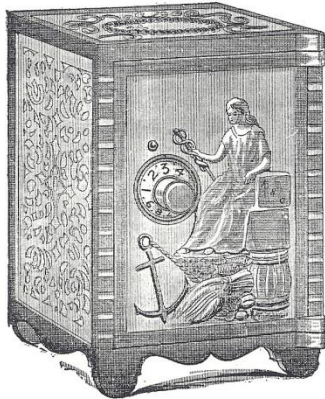
THE GUARANTEED LINE SAVINGS BANKS.



Beautifully polished and finished. A handsome and substantial bank.
Carefully fitted with excellent lock.

No. 300. Nickel Plated. } Length, 4 1/2 ins. Width, 2 3/4 ins. Height, 3 1/2 ins.
No. 305. Copper Oxidized. } 1 in a box. 2 dozen in a case. 50 lbs. per case.

BANK OF COMMERCE.



Combination lock.
Handsomely finished.
All iron.

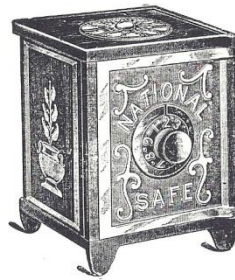
No. 642. Nickel Plated.
No. 643. Electro Oxidized.

Height, 6 3/4 inches.
Width, 5 inches.
Depth, 4 3/4 inches.

1 in a box.
2 dozen in a case.
130 lbs. per case.

22 GREY IRON CASTING CO. MOUNT JOY, PENNA. U.S.A.

THE GUARANTEED LINE COMBINATION BANKS.



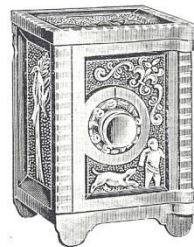
Nos. 50 and 50A.

New design. Well finished.
Good combination lock.
Steel sides and back.

No. 600. Nickel Plated.
No. 600A. Electro Oxidized.

Height, 4 1/4 inches.
Width, 3 1/4 inches.
Depth, 3 1/8 inches.

1/2 dozen in a box. 1 gross in a case.
195 lbs. per case.



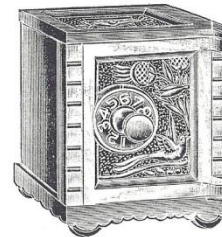
No. 70.

Handsomely polished and plated.
Good combination lock.
Embossed steel sides and back.

No. 50. Nickel Plated.
No. 50A. Electro Oxidized.

Height, 5 inches.
Width, 3 3/4 inches.
Depth, 3 3/4 inches.

1/2 dozen in a box. 6 dozen in a case.
133 lbs. per case.



No. 600.

New design. Handsome finish.
Good combination lock.

No. 70. Nickel Plated.
No. 70A. Electro Oxidized.

Height, 4 inches.
Width, 2 3/4 inches.
Depth, 2 3/4 inches.

1/2 dozen in a box. 1 gross in a case.
180 lbs. per case.

GREY IRON CASTING CO. MOUNT JOY, PENNA. U.S.A. 21

THE GUARANTEED LINE

BANK OF INDUSTRY.



Combination lock.
Attractive design.
All iron.

No. 638. Nickel Plated.
No. 639. Electro Oxidized.

Height, 5 1/2 inches.
Width, 4 1/4 inches.
Depth, 4 inches.

1 in a box. 3 dozen in a case.
130 lbs. per case.

COLUMBUS SAFE.

Embossed steel sides and back.
Finely finished.
Good combination lock.

No. 105. Nickel Plated.
No. 105A. Electro Oxidized.

Height, 5 1/2 inches.
Width, 4 1/4 inches.
Depth, 4 inches.

1 in a box.
3 dozen in a case.
95 lbs. per case.



1915 TOY CATALOG - CONTINUED

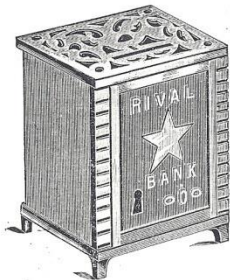
24 GREY IRON CASTING CO.



MOUNT JOY, PENNA. U.S.A.

THE GUARANTEED LINE

KEY BANKS.



Nos. 25 and 25A.

The Rival.

There is always a certain demand for key locking banks, and no stock is complete without them.

Good lock and key.
Steel sides and back.
Finely finished.

No. 25. Polished and Nickel Plated.

No. 25A. Electro Oxidized.

Height, $3\frac{1}{2}$ inches.
Width, $2\frac{1}{2}$ inches.
Depth, $2\frac{1}{2}$ inches.

1 dozen in a box. 2 gross in a case.
205 lbs. per case.

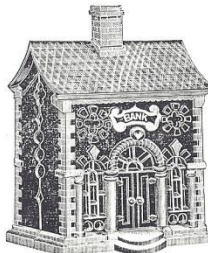
SAFE DEPOSIT BANKS.

These banks are always popular.
Strongly constructed and well finished.

No. 119. Decorated with Gold Bronze.
No. 900. Berlin Bronze.

Height, $5\frac{1}{4}$ inches.
Width, $3\frac{3}{4}$ inches.
Depth, 3 inches.

$\frac{1}{2}$ dozen in a box. $\frac{1}{2}$ gross in a case.
185 lbs. per case.



Nos. 119 and 900.

GREY IRON CASTING CO.



MOUNT JOY, PENNA. U.S.A.

23

THE GUARANTEED LINE

COMBINATION BANKS.



No. 80.

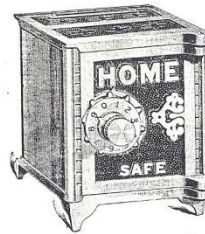
New design. Finely finished.
Good combination lock.

No. 150. Nickel Plated.

No. 150A. Electro Oxidized.

Height, $3\frac{1}{4}$ inches.
Width, $2\frac{1}{2}$ inches.
Depth, $2\frac{3}{8}$ inches.

1 dozen in a box. 2 gross in a case.
200 lbs. per case.



Nos. 100 and 100A.

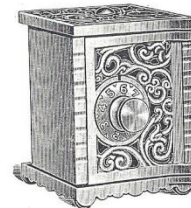
Handsome new design.
Good combination lock.
Embossed steel sides and back.

No. 80. Nickel Plated.

No. 80A. Electro Oxidized.

Height, 4 inches.
Width, $2\frac{7}{8}$ inches.
Depth, $2\frac{7}{8}$ inches.

$\frac{1}{2}$ dozen in a box. 1 gross in a case.
155 lbs. per case.



No. 150.

A good seller. Handsome finish.
Good combination lock.
Steel sides and back.

No. 100. Nickel Plated.

No. 100A. Electro Oxidized.

Height, $3\frac{3}{4}$ inches.
Width, $2\frac{1}{2}$ inches.
Depth, $2\frac{1}{2}$ inches.

$\frac{1}{2}$ dozen in a box. 1 gross in a case.
135 lbs. per case.

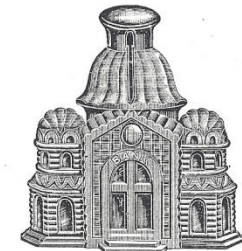
26 GREY IRON CASTING CO.



MOUNT JOY, PENNA. U.S.A.

THE GUARANTEED LINE

SAFE DEPOSIT BANKS.



No. 205.

Very popular banks. Strongly made and well finished.

No. 205. Coppered. } Height, $3\frac{1}{4}$ ins. Width, $3\frac{1}{8}$ ins. Depth, 2 ins.
No. 206. Bronze Decorated. } 1 doz. in a box. 2 gross in a case. 200 lbs. per case.

No. 210. Coppered. } Height, $4\frac{1}{4}$ ins. Width, $4\frac{1}{4}$ ins. Depth, $2\frac{5}{8}$ ins.
No. 211. Bronze Decorated. } $\frac{1}{2}$ doz. in box. 1 gross in case. 180 lbs. per case.

Nos. 225 and 230 are similar design to above, but have combination lock.

No. 225. Bronze Decorated. } Height, $5\frac{1}{8}$ ins. Width, $5\frac{1}{4}$ ins. Depth, 3 ins.
No. 230. Electro Oxidized. } 1 in a box. $\frac{1}{2}$ gross in a case. 190 lbs. per case.

GLOBE BANKS.

Made entirely of cast iron, with the continents
cast in relief and suitably decorated
in colors.

No. 35. Enameled.

Height, $5\frac{1}{2}$ inches.

$\frac{1}{2}$ dozen in a box. 1 gross in a case.
190 lbs. per case.



No. 35.

1915 TOY CATALOG - CONTINUED

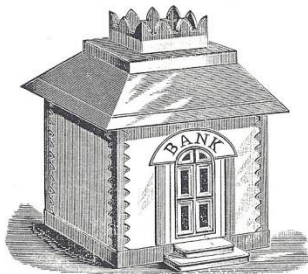
GREY IRON CASTING CO.



MOUNT JOY, PENNA. U.S.A. 25

THE GUARANTEED LINE

SAFE DEPOSIT BANKS.

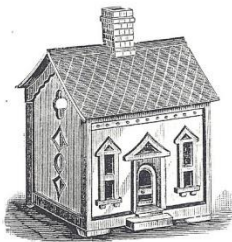


Nos. 10 and 10A.

No. 8. Coppered

Height, $3\frac{1}{4}$ inches.
Width, $2\frac{1}{2}$ inches.
Depth, 2 inches.

1 dozen in a box. 2 gross in a case.
210 lbs. per case.



No. 5.

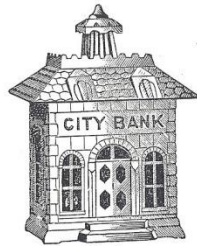
Always popular.
Excellent values.

No. 10. Berlin Bronze.
Decorated in
assorted colors.

No. 10A. Gold Bronze.

Height, 4 inches.
Width, 3 inches.
Depth, $2\frac{1}{2}$ inches.

$\frac{1}{2}$ dozen in a box.
1 gross in a case.
175 lbs. per case.



No. 8.

No. 5. Coppered.

Height, $3\frac{1}{4}$ inches.
Width, $2\frac{1}{4}$ inches.
Depth, $2\frac{1}{4}$ inches.

1 dozen in a box. 2 gross in a case.
190 lbs. per case.

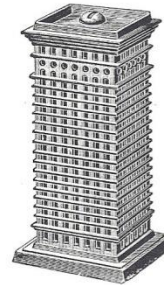
GREY IRON CASTING CO.



MOUNT JOY, PENNA. U.S.A. 27

THE GUARANTEED LINE

SKYSCRAPER BANKS.



A city "Skyscraper" in miniature.
A big seller.

No. 620. Aluminum Finish.

Height, $5\frac{1}{2}$ inches.

1 dozen in a box. 1 gross in a case.
150 lbs. per case.

The Flatiron Building.

An accurate reproduction of this famous
building.

A popular item.

No. 615. Aluminum Finish.

Height, $5\frac{1}{2}$ inches.

1 dozen in a box. 1 gross in a case.
150 lbs. per case.

No. 616. Aluminum Finish.

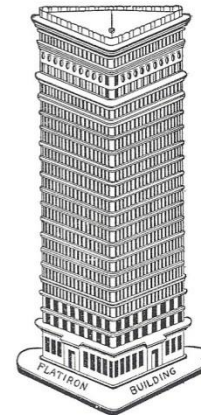
Height, 6 inches.

$\frac{1}{4}$ dozen in a box. $\frac{1}{2}$ gross in a case.
140 lbs. per case.

No. 618. Aluminum Finish.

Height, $8\frac{1}{2}$ inches.

$\frac{1}{6}$ dozen in a box. $\frac{1}{4}$ gross in a case.
140 lbs. per case.



1915 TOY CATALOG - CONTINUED

28 GREY IRON CASTING CO. MOUNT JOY, PENNA. U.S.A.

THE GUARANTEED LINE

FIGURE BANKS.

MOST ATTRACTIVE LITTLE DUTCH FIGURES.

New Designs, Beautifully Modeled and Handsomely Finished.



No. 400.
Dutch Boy.



No. 401.
Dutch Girl.

6 3/4 inches high. Finished in Brilliant Gold Lacquer. 1/2 dozen assorted in a box.
1 gross in a case. 180 lbs. per case.



No. 402.
Mermaid.



No. 403.
Dolphin.

4 5/8 inches high. 4 1/2 inches long. Finished in Brilliant Gold Lacquer.
1/2 dozen assorted in a box. 1 gross in a case.
180 lbs. per case.

30 GREY IRON CASTING CO. MOUNT JOY, PENNA. U.S.A.

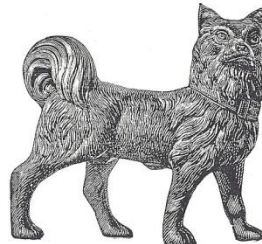
THE GUARANTEED LINE

ANIMAL BANKS.

THESE BANKS ARE ALL
NEW DESIGNS.

Artistically modeled true to
life, and handsomely finished
in oxidized copper.

They are entirely out of
the ordinary run of this
class of banks and should
not be confused with the
ungainly and poorly fin-
ished banks of this charac-
ter heretofore on the
market.

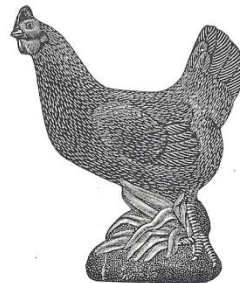


No. 425.

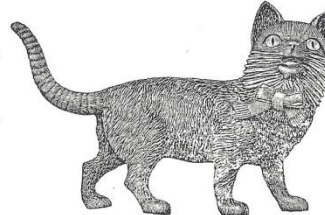
No. 425—Dog.
5 inches high. 5 3/4 inches long.

No. 426—Cat.
4 1/2 inches high. 7 inches long.

No. 427—Chicken.
6 1/4 inches high. 5 inches long
OXIDIZED COPPER FINISH.



No. 427.



No. 426.

No. 427A Assortment.

This assortment consists of

- 2 No. 425 Dog,
- 2 " 426 Cat,
- 2 " 427 Chicken,

assorted in a box.

1/2 gross in a case.

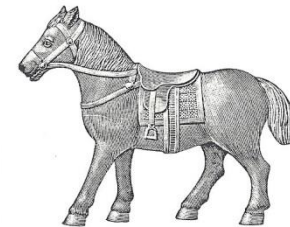
140 lbs. per case.

GREY IRON CASTING CO. MOUNT JOY, PENNA. U.S.A. 29

THE GUARANTEED LINE

ANIMAL BANKS.

New Designs, Beautifully Modeled and Attractively Finished.



No. 404.

Pony.

Height, 4 1/2 inches. Length, 5 1/2 inches.
160 lbs. per case.

Finished in Brilliant Gold Lacquer.

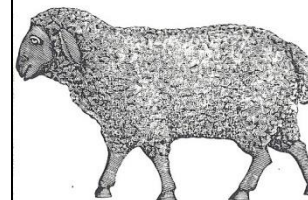
1/2 dozen in a box. 1 gross in a case.



No. 405.

Cat.

Height, 4 1/2 inches.
180 lbs. per case.



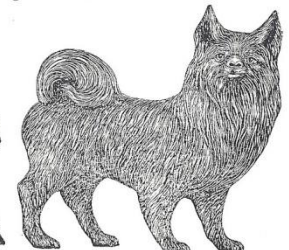
No. 406.

Sheep.

Length, 5 1/2 inches. Height, 3 3/8 inches.
180 lbs. per case.

Finished in Brilliant Gold Lacquer.

1/2 dozen in a box. 1 gross in a case.




No. 407.

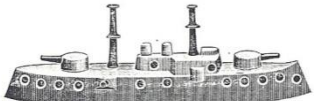
Dog.

Length, 4 5/8 inches. Height, 4 1/4 inches.
170 lbs. per case.

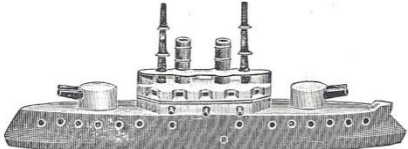
1915 TOY CATALOG - CONTINUED

GREY IRON CASTING CO.  MOUNT JOY, PENNA. U.S.A. 31

THE GUARANTEED LINE
BATTLESHIP BANKS.




Aluminum hull, decorated masts and turrets.
No. 15. Savings Bank Battleship.
8½ inches long. 1 in a box. 1 gross in a case. 165 lbs. per case.

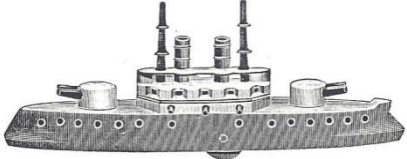


Aluminum hull, decorated masts and turrets.
No. 30. Savings Bank Battleship.
11¼ inches long. 1 in a box. ½ gross in a case. 150 lbs. per case.

TOY BATTLESHIPS.



Mounted on Wheels.
Aluminum hull, decorated masts and turrets.
No. 10. Toy Battleship.
8½ inches long. 1 in a box. 1 gross in a case. 140 lbs. per gross.



Mounted on Wheels.
Aluminum hull, decorated masts and turrets.
No. 25. Toy Battleship.
11¼ inches long. 1 in a box. ½ gross in a case. 135 lbs. per case.

IRON TOY BANKS and Other Iron Toys

QUICK SELLERS AND GOODS THAT WONT GO OUT OF DATE. THEY SELL ALL YEAR



The OREGON, a 25-cent Battleship. It is large, shows good value and sells on sight.

The IOWA, a smaller vessel, sells for 10 cents. It is big for the money and moves rapidly. Both these boats are made as banks and on wheels. The FORTUNE—"when my ship comes in"—is a lively 10-cent article. Rapid seller.



HAT BANKS
DERBY
A dainty little one for a nickel.



GRANDPA'S PLUG
A much larger and more formidable one. Holds more money. A big thing for a dime. Takes well everywhere.

LITTLE KITCHEN GOODS
All quick-moving 5 and 10-cent articles. They sell well because the people want them and they are big value for the money.



Tea Kettles, Waffle Irons, Pots, Gridirons, Griddles, Skillets, Kettles, Sad Irons.



Bath Tubs made exactly like the Porcelain Roll Top. Coal Hods, Fire Sets, Scales. Three sizes.



CHRISTMAS TREE HOLDERS
To fit all sizes of tree and hold them firmly and securely.

Our 1898 Catalogue tells about these things and whole lot of other goods. Get it.

LOGAN & STROBRIDGE IRON CO.

NEW BRIGHTON, PA., U. S. A.

1898 LOGAN & STROBRIDGE AD

1917-1918 PATENTS

DESIGN.

A. H. SANDER.
TOY CRADLE BANK.

APPLICATION FILED FEB. 29, 1916.

50,667.

Patented Apr. 24, 1917.

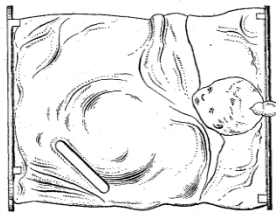


Fig. 1.

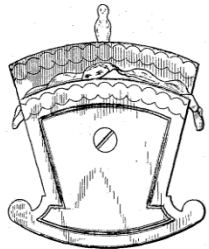


Fig. 2.

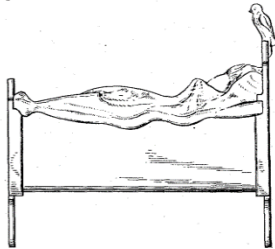


Fig. 3.

ALFRED H. SANDER Inventor

By

Attorney

Robert Magraw

DESIGN.

A. H. SANDER.
TOY BANK

APPLICATION FILED FEB. 29, 1916.

51,932.

Patented Apr. 2, 1918.

Fig. 1.

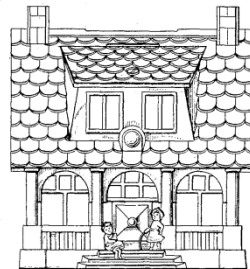


Fig. 2.



Fig. 3.

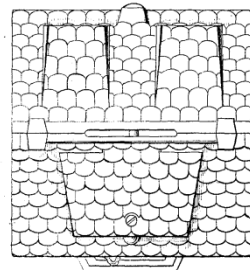


Fig. 4.



ALFRED H. SANDER Inventor

By

Attorney

Robert Magraw

W. A. COVENTRY.
TOY BANK.

APPLICATION FILED FEB. 21, 1918.

1,274,010.

Patented July 30, 1918.

Fig. 1.



Fig. 2.

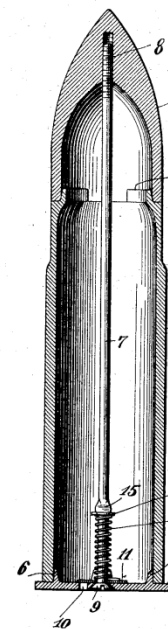


Fig. 3.

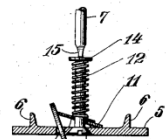
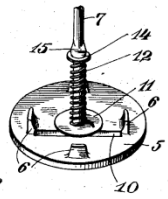


Fig. 4.



INVENTOR.

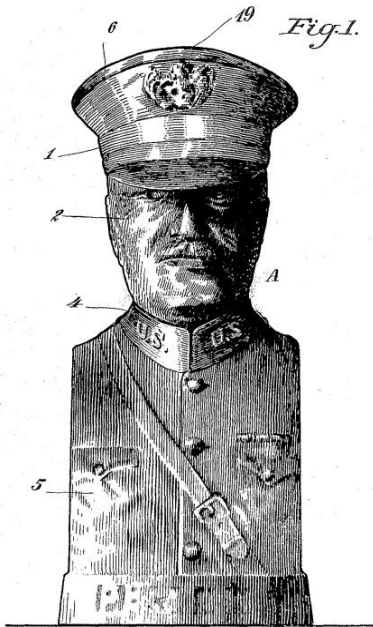
BY *William A. Coventry*
George Ramsey
ATTORNEY

1919 PATENT

1,324,174.

A. H. SANDER.
TOY SAVINGS BANK.
APPLICATION FILED MAR. 4, 1919.

Patented Dec. 9, 1919.
3 SHEETS—SHEET 1.

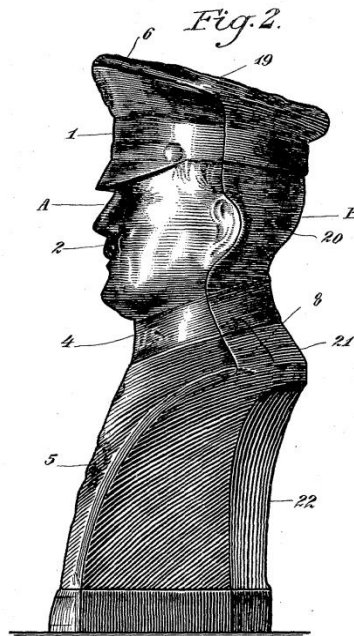


Alfred H. Sander
Inventor
By George Ramsey
Attorney

1,324,174.

A. H. SANDER.
TOY SAVINGS BANK.
APPLICATION FILED MAR. 4, 1919.

Patented Dec. 9, 1919.
3 SHEETS—SHEET 2.

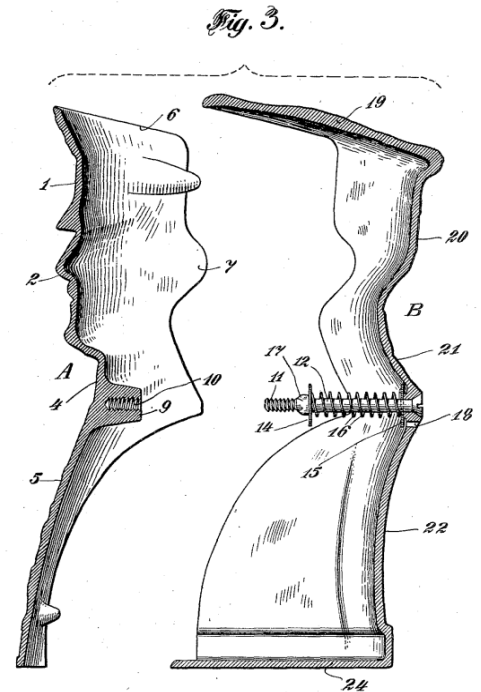


Alfred H. Sander
Inventor
By George Ramsey
Attorney

1,324,174.

A. H. SANDER.
TOY SAVINGS BANK.
APPLICATION FILED MAR. 4, 1919.

Patented Dec. 9, 1919.
3 SHEETS—SHEET 3.



Alfred H. Sander
Inventor
By George Ramsey
Attorney

1920 ADVERTISEMENT

98 TOYS AND NOVELTIES January, 1920

RIEMANN, SEABREY CO.

AMERICAN TOY FAIR



**THE GUARANTEED LINE
of Iron Toys**

Grey Iron Casting Co.
MOUNT JOY, PA.

BANKS TRAINS
STOVES & RANGES
TOY HAMMERS
TOY HATCHETS SCOUT AXES
ICE WAGONS TOY TOOLS
JACKSTONES
TOY SADIRONS

New York Representatives: RIEMANN, SEABREY CO.
11-15 Union Square West
Export Representatives: CROWELL, LEHNHARDT CO.
86 Warren St., New York














GREY KLIP ARMIES

SET No. 6 - BATTERY F.


AMERICAN TOYS

WHEN ANSWERING ADVERTISEMENTS, PLEASE MENTION TOYS AND NOVELTIES


The Riemann-Seabrey Company was the primary sales representative for the Grey Iron Company starting in 1908.

1922 TOY CATALOG



30 **GREY-IRON-CASTING-CO.**  **MOUNT JOY, PA., U.S.A.**
THE GUARANTEED LINE

COMBINATION BANKS.



Handsome Design.
Highly Polished and Finished.
A high grade safe with accurate combination.

No. 2000.

No. 2000. Highly Polished and Nickel Plated.
7 inches high. $5\frac{1}{4}$ inches wide. $4\frac{1}{2}$ inches deep.
1 in a box. 2 dozen in a case. 165 lbs. per case.


No. 535. Highly Polished and Nickel Plated.
Design similar to No. 2000, but with steel sides and back.
6 inches high. $4\frac{1}{4}$ inches wide. $3\frac{1}{4}$ inches deep.
1 in a box. 3 dozen in a case. 115 lbs. per case.

No. 535W. Nickel Plated. Same as No. 535, but not so highly polished.
1 in a box. 3 dozen in a case. 115 lbs. per case.

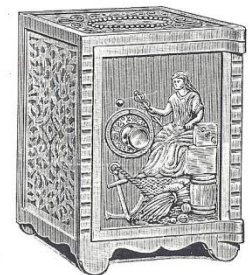
No. 285W. Nickel Plated. Steel sides and back.
 $4\frac{3}{4}$ inches high. 3 inches wide. $2\frac{1}{2}$ inches deep.
4 in a box. 6 dozen in a case. 100 lbs. per case.

No. 275. Same as No. 2000, except as to size.
Highly Polished and Nickel Plated.
 $4\frac{3}{4}$ inches high. 3 inches wide. $2\frac{1}{2}$ inches deep.
4 in a box. 6 dozen in a case. 125 lbs. per case.

(All our Banks have slot large enough to accommodate a half dollar or English penny.)

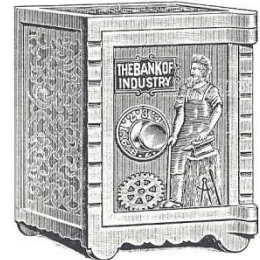
GREY-IRON-CASTING-CO.  **MOUNT JOY, PA., U.S.A.** 31
THE GUARANTEED LINE

COMBINATION BANKS.



Very popular.
Beautifully Finished.
Excellent combination lock.

No. 642. Highly Polished and Nickel Plated.
No. 642B. Finished in Blue Enamel.
 $6\frac{3}{4}$ inches high. 5 inches wide. $4\frac{3}{4}$ inches deep.
1 in a box. 2 dozen in a case. 130 lbs. per case.



Fine combination lock.
Attractive Design.
All Iron.

No. 638. Highly Polished and Nickel Plated.
No. 638B. Finished in Blue Enamel.
 $5\frac{1}{2}$ inches high. $4\frac{1}{4}$ inches wide. 4 inches deep.
1 in a box. 3 dozen in a case. 130 lbs. per case.

(All our Banks have slot large enough to accommodate a half dollar or English penny.)

1922 TOY CATALOG - CONTINUED

32

GREY-IRON-CASTING-CO. MOUNT JOY, PA., U.S.A.
THE GUARANTEED LINE

COMBINATION BANKS.



Embossed steel sides and back.
Finely Finished.
Good combination lock.

No. 105. Highly Polished and Nickel Plated.
5½ inches high. 4¼ inches wide. 4 inches deep.
1 in a box. 3 dozen in a case. 90 lbs. per case.



Handsomely Finished.
Good combination lock.
Embossed steel sides and back.

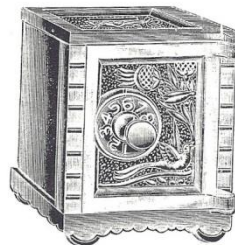
No. 50. Polished and Nickel Plated.
5 inches high. 3¾ inches wide. 3¾ inches deep.
½ dozen in a box. 6 dozen in a case. 125 lbs. per case.

(All our Banks have slot large enough to accommodate a half dollar or English penny.)

GREY-IRON-CASTING-CO. MOUNT JOY, PA., U.S.A.
THE GUARANTEED LINE

33

COMBINATION BANKS.



No. 600.

New Design. Well Finished.
Good Combination Lock.
Steel Sides and Back.
No. 600. Nickel Plated.
No. 600B. Finished in Blue Enamel.
Height, 4¼ inches.
Width, 3¼ inches.
Depth, 3½ inches.
½ dozen in a box. 1 gross in a case.
190 lbs. per case.

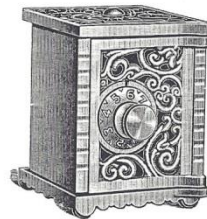


No. 80.

Handsome New Design.
Good Combination Lock.
Embossed Steel Sides and Back.

No. 80. Nickel Plated.
Height, 4 inches.
Width, 2¾ inches.
Depth, 2¾ inches.

½ dozen in a box. 1 gross in a case.
145 lbs. per case.



No. 150.

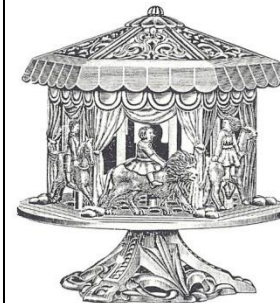
New Design. Finely Finished.
Good Combination Lock.
No. 150. Nickel Plated.
Height, 3¼ inches.
Width, 2½ inches.
Depth, 2¾ inches.
1 dozen in a box. 2 gross in a case.
200 lbs. per case.

(All our Banks have slot large enough to accommodate a half dollar or English penny.)

34

GREY-IRON-CASTING-CO. MOUNT JOY, PA., U.S.A.
THE GUARANTEED LINE

MERRY-GO-ROUND BANK.



Patented.

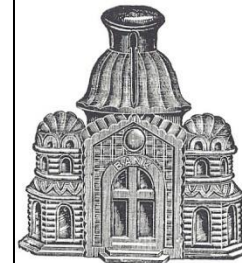
No. 40D. Decorated in colors.
Height, 5 inches. Diameter, 4½ inches.
1 in a carton. 6 dozen in a case. 140 lbs. per case.

Distinctly New and Novel.

Handsomely Designed and Finished.

Bank Revolves on Base.

SAFE DEPOSIT BANKS.



Very Popular Banks.

Strongly Made and Well Finished.

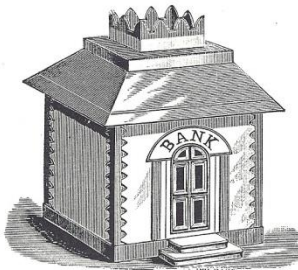
No. 206. Bronze Decorated. 3¼ ins. high. 3½ ins. wide. 2 ins. deep.
1 dozen in a box. 2 gross in a case. 200 lbs. per case.
No. 211. Decorated in colors. 4¼ ins. high. 4¼ ins. wide. 2¾ ins. deep.
½ dozen in a box. 1 gross in a case. 180 lbs. per case.

(All our Banks have slot large enough to accommodate a half dollar or English penny.)

1922 TOY CATALOG - CONTINUED

GREY-IRON-CASTING-CO.  MOUNT JOY, PA., U.S.A. 35
THE GUARANTEED LINE

SAFE DEPOSIT BANKS.

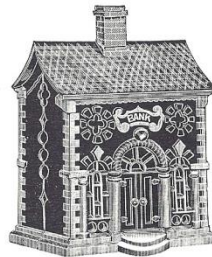


No. 10A.

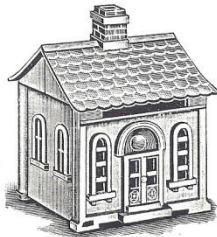
Always Popular.
Excellent Values.
No. 10A. Decorated in colors.
Height, 4 inches.
Width, 3 inches.
Depth, 2½ inches.
½ dozen in a box.
1 gross in a case.
175 lbs. per case.

These Banks Are Always Popular.
Strongly Constructed and Well Finished.

No. 119. Decorated in colors.
Height, 5¼ inches.
Width, 3¾ inches.
Depth, 3 inches.
4 in a box. ½ gross in a case.
185 lbs. per case.



No. 119.



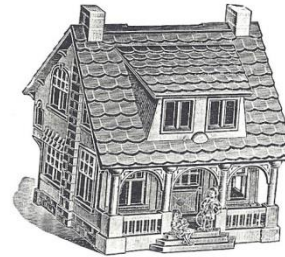
No. 4.

No. 4. Coppered.
Height, 3¼ inches.
Width, 2¾ inches.
Depth, 2¼ inches.
1 dozen in a box. 2 gross in a case.
165 lbs. per case.

(All our Banks have slot large enough to accommodate a half dollar or English penny.)

36 GREY-IRON-CASTING-CO.  MOUNT JOY, PA., U.S.A.
THE GUARANTEED LINE

BUNGALOW BANK.



Patented.
No. 20.

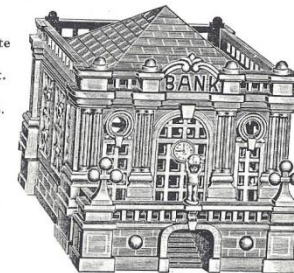
A Perfect Model of a Beautifully
Designed Bungalow.
Absolutely New.
Must Be Seen To Be Appreciated.
No. 20D. Decorated in Colors.

Height, 3½ inches.
Width, 3¼ inches.
Depth, 3½ inches.
1 in a carton.
6 dozen in a case.
115 lbs. per case.

UNITED STATES TREASURY BANK.

Handsomely Modeled and Complete
in Every Detail.
Nothing Like It On The Market.

No. 45D. Decorated in Colors.
Height, 3¼ inches.
Width, 3¼ inches.
Depth, 4 inches.
1 in a carton.
6 dozen in a case.
115 lbs. per case.



Patented.
No. 45.

(All our Banks have slot large enough to accommodate a half dollar or English penny.)

1922 TOY CATALOG - CONTINUED

GREY-IRON-CASTING-CO.  MOUNT JOY, PA., U.S.A. 37
THE GUARANTEED LINE

LIBERTY BELL BANK.



No. 1776.

A splendid reproduction in miniature of the Old Liberty Bell that announced the Adoption of the Declaration of Independence.

Instills Thrift and Patriotism in the Child's Mind.

Handsomely Finished in Bronze Plate.
Raised Portions Polished.

1 in a carton. 6 dozen in a case.
100 lbs. per case.

ICE CREAM FREEZER BANK.



No. 440.

Attractively Finished in Colors.

Height, $4\frac{1}{2}$ inches.

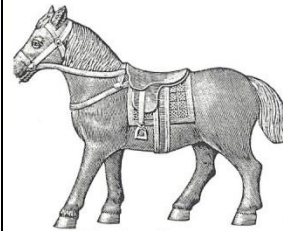
1 in a carton. 6 dozen in a case.

110 lbs. per case.

38 GREY-IRON-CASTING-CO.  MOUNT JOY, PA., U.S.A.
THE GUARANTEED LINE

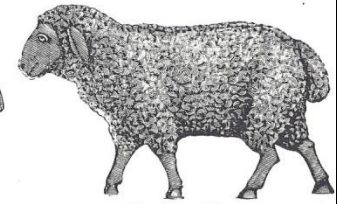
ANIMAL BANK ASSORTMENT.

New Designs. Faithful Delineations. Attractively Finished.



No. 404. Pony.

$5\frac{1}{2}$ ins. long. $4\frac{1}{2}$ ins. high.



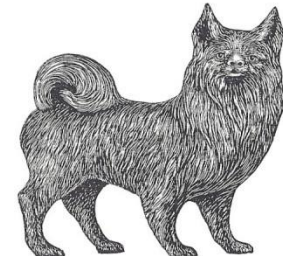
No. 406. Sheep.

$5\frac{1}{2}$ ins. long. $3\frac{3}{8}$ ins. high.



No. 405. Cat.

$4\frac{1}{2}$ ins. high.



No. 407. Dog.

$4\frac{3}{8}$ ins. long. $4\frac{1}{4}$ ins. high

Finished in Brilliant Gold Lacquer.

No. 422. Assortment.

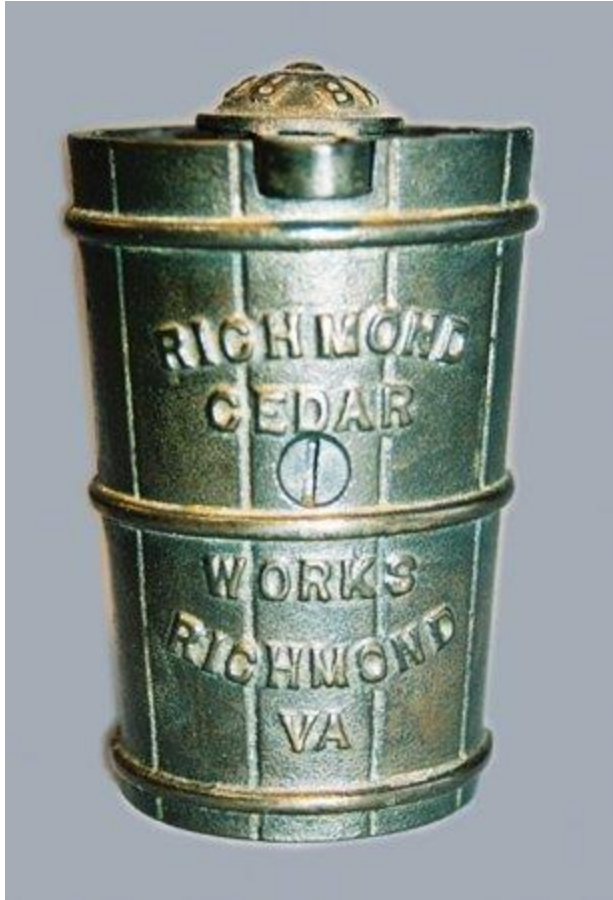
3 each, Nos. 404, 405, 406 and 407 in a box

1 gross pieces in a case.

170 lbs. per case.

(All our Banks have slot large enough to accommodate a half dollar or English penny.)

CIRA 1925



Patterned after the North Pole Freezer, this advertising bank was offered in the mid 1920's.

1926

In 1926,
Philadelphia
hosted a
celebration
commemorating
the 150th
anniversary of the
founding of the
United States.



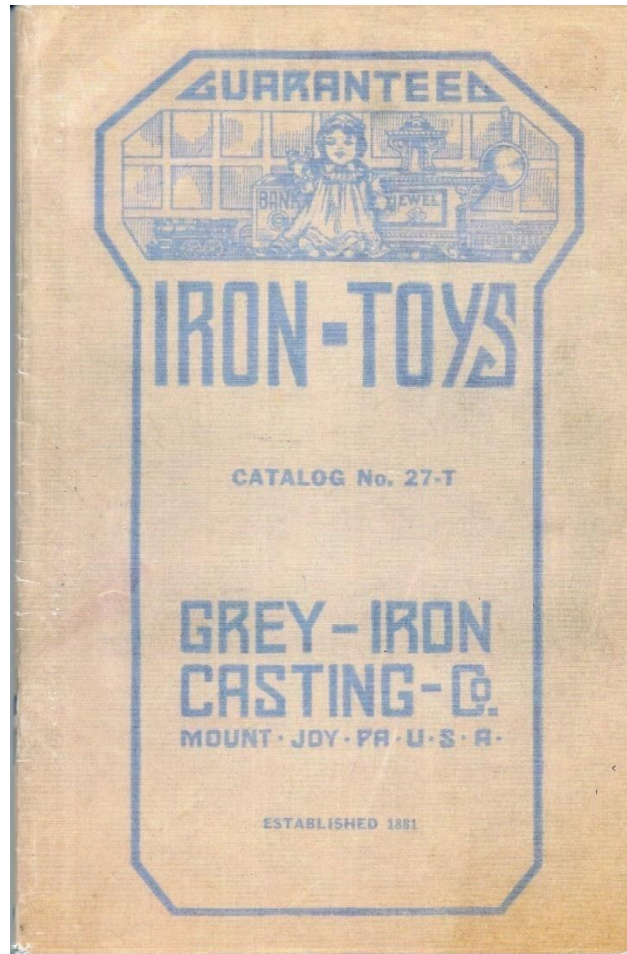
1927



The Exhibition failed to make a significant amount of revenue and faced extreme financial difficulties

The entire festival was placed into equity receivership by the United States District Court on April 27, 1927.

1927 TOY CATALOG



**BANK LISTINGS
IDENTICAL TO
CATALOG NO. 22-T**


1932 CATALOG



22

GREY IRON TOYS

George Washington Bank



A Feature for the Washington Bicentennial.

A handsome figure modeled after the famous Houdon Bust. Beautifully finished in Statuary Bronze.


While primarily designed as a Bank, its artistic merit makes worthy a place in any home, or on any desk as an ornament.

A pair of them make handsome Book Ends.

No. 1932. 8 inches high. Statuary Bronze Finish.

Each in a box. 1 dozen in a case. 42 lbs. per case.

Liberty Bell Bank



A splendid reproduction in miniature of the old Liberty Bell that announced the adoption of the Declaration of Independence, with a bust of George Washington on one side, making it a very timely feature for the Washington Bicentennial year.

No. 1776. 3 3/4 inches high. Attractive Oxidized Finish.


Each in a box. 2 dozen in a case. 33 lbs. per case.

GREY IRON TOYS

23


GREY IRON TOYS

Bungalow Bank



A Perfect Model of a Beautifully Designed Bungalow. Absolutely New. Must be seen to be appreciated.

Height, 3 1/2 inches.



#1512

MAY 11 1932

LAND

(All our Banks have slot large enough to accommodate a half dollar or English penny.)

GREY IRON TOYS

1932 CATALOG - CONTINUED

24

Combination Banks



Very Popular.

Beautifully Finished.

Excellent Combination Lock.

No. 642. Highly Polished and Nickel Plated.
6¼ inches high. 5 inches wide. 4¾ inches deep.
1 in a box. 2 dozen in a case. 130 lbs. per case.

Fine Combination Lock.

Attractive Design.

All Iron.



No. 638. Highly Polished and Nickel Plated.
5½ inches high. 4¾ inches wide. 4 inches deep.
1 in a box. 3 dozen in a case. 130 lbs. per case.

(All our Banks have slot large enough to accommodate a half dollar or English penny.)

SAFETY
1919

Combination Banks



Handsomely Finished.

Good Combination Lock.

Embossed steel sides and back.

Height, 5 inches.
Width, 3¾ inches.
Depth, 3¾ inches.

No. 50. Polished and Nickel Plated.
No. 50C. Finished in Bright Colored Enamels,
3 Colors assorted in a box.

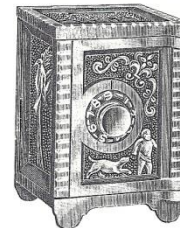
½ dozen in a box. 6 dozen in a case. 125 lbs. per case.

Handsome New Design.

Good Combination Lock.

Embossed steel sides and back.

Height, 4 inches.
Width, 2¾ inches.
Depth, 2¾ inches.



No. 80. Nickel Plated.
No. 80C. Finished in Colored Enamels,
3 Colors assorted in a box.

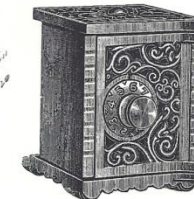
½ dozen in a box. 1 gross in a case. 145 lbs. per case.

(All our Banks have slot large enough to accommodate a half dollar or English penny.)

SAFETY
1919

26

Combination Banks



No. 150.

New Design. Finely Finished.
Good Combination Lock.

No. 150. Nickel Plated.

¾ in. high. 2½ in. wide. 2¾ in. deep.
1 dozen in a box. 2 gross in a case.
200 lbs. per case.

Safe Deposit Banks

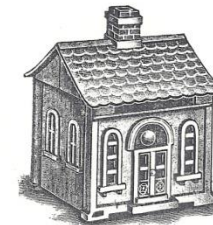
These Banks Are Always Popular.
Strongly Constructed and
Well Finished.

No. 211C. Finished in Bright Colored
Lacquers. Packed assorted
3 colors in a box.

4¼ in. high. 4¼ in. wide. 2¾ in. deep.
½ dozen in a box. 1 gross in a case.
180 lbs. per case.



No. 211C.



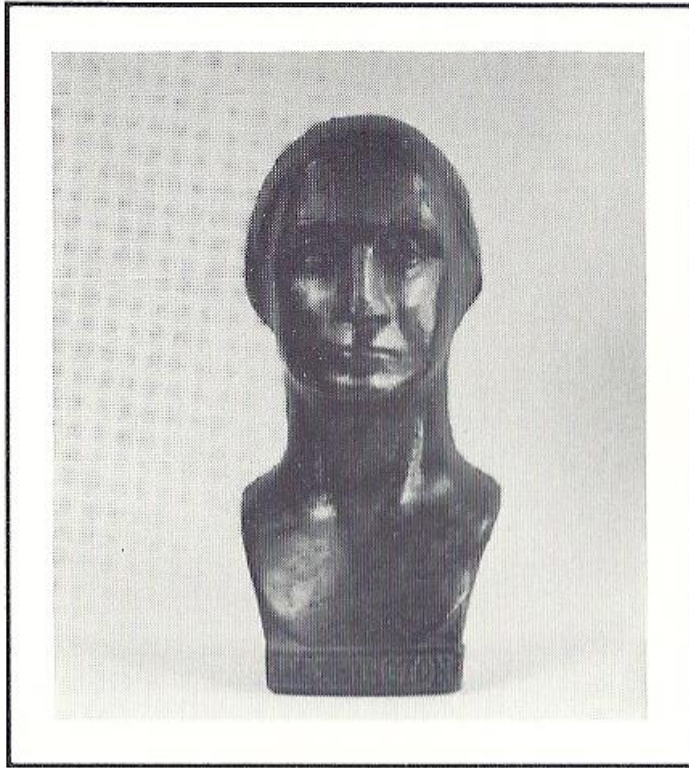
No. 4.

No. 4. Coppered.
No. 4C. Finished in Colored Lac-
quers and packed assorted
4 Colors in a box.

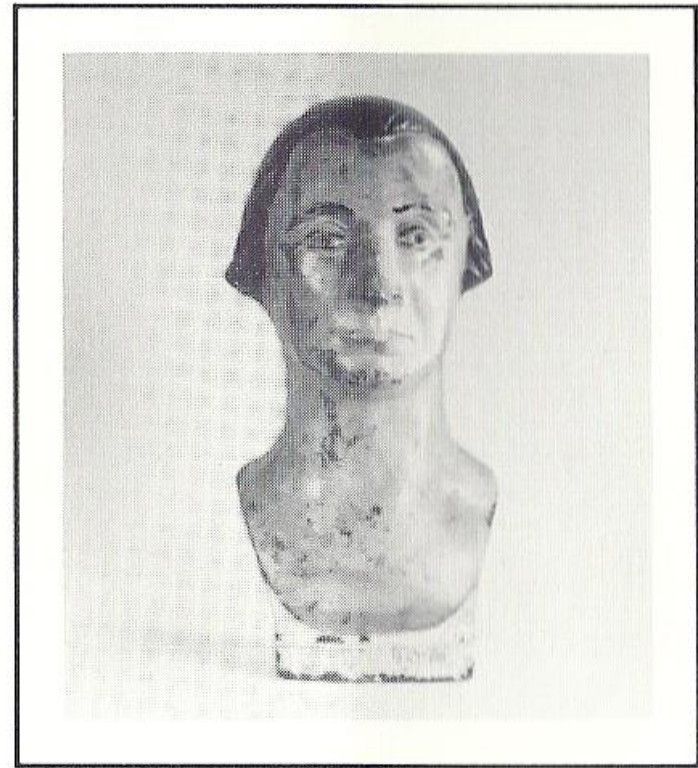
¾ in. high. 2¾ in. wide. 2½ in. deep.
1 dozen in a box. 2 gross in a case.
165 lbs. per case.

SAFETY
1919

GEORGE WASHINGTON VARIATIONS

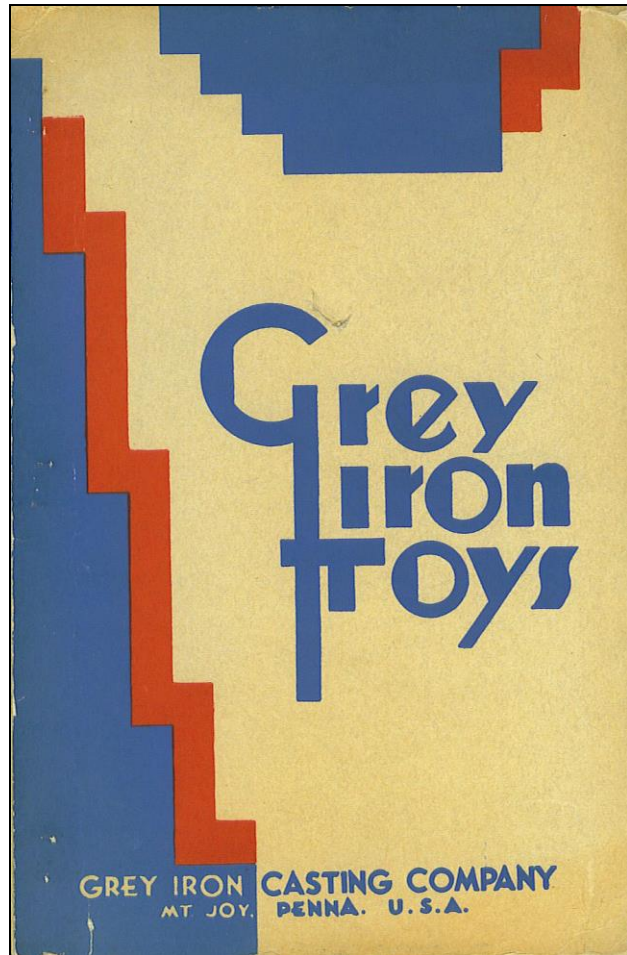


118. _____ Washington, Tall
Bust M 153 CI 8 in.




119. _____ Washington, Long
Hair Bust M (NL) CI 8 in.

CIRA 1935 CATALOG



37

Combination Banks



Handsomely Finished.
Good Combination Lock.
Durable steel sides and back.

Height, 5 inches.
Width, 3¾ inches.
Depth, 3¾ inches.

No. 50. Polished and Nickel Plated.
No. 50C. Finished in Bright Colored Enamels.
3 Colors assorted in a box.


½ dozen in a box. 3 dozen in a case. 53 lbs. per case.

Handsome New Design.
Good Combination Lock.
Durable steel sides and back.

Height, 4 inches.
Width, 2¾ inches.
Depth, 2¾ inches.

No. 80. Nickel Plated.
No. 80C. Finished in Colored Enamels.
3 Colors assorted in a box.


½ dozen in a box. 6 dozen in a case. 63 lbs. per case.



(All our Banks have slot large enough to accommodate a half dollar or English penny.)

38

Combination Banks



New Design. Finely Finished.
Good Combination Lock.
No. 150. Nickel Plated.

3¼ in. high. 2½ in. wide. 2¾ in. deep.
1 dozen in a box. 6 dozen in a case.
42 lbs. per case.


United States Treasury Bank

Handsomely Modeled and Complete in Every Detail.
Nothing like it on the market.

No. 45D.

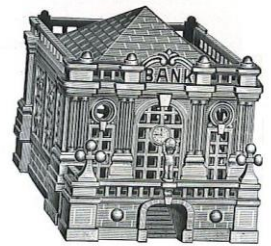
Decorated in Colors.
Height, 3¼ inches.
Width, 3¼ inches.
Depth, 4 inches.

4 in a box. 3 dozen in a case.
48 lbs. per case.



No. 4. Coppered.
No. 4C. Finished in Colored Lacquers and packed assorted. 4 colors in a box.

3¼ in. high. 2¾ in. wide. 2¾ in. deep.
1 dozen in a box. 6 dozen in a case.
38 lbs. per case.



1940'S

- In 1941 the Grey Iron Casting Company suspended the manufacture of iron toys.
- There contribution to the war effort was the manufacture of munitions.

1950's & 1960's



Several cast iron banks and toys were reissued using the original molds.

Included in this offering were three different safes. These are easily identified due to their die-cast dials.

EPILOGUE

- 1968 the Grey Iron Casting Company was acquired by the Donsco Corporation headquartered in Wrightsville, PA.
- February 10, 1979 – Fire broke out in the Grey Iron Casting Company. Damage to the structure and contents exceeded \$1.5M. The cause was later found to be arson.
- Late 1979 – a new foundry was erected by Donsco in Mount Joy.

QUESTIONS?

